

Réamheolaire Fochéime



Ollscoil Phontaifiúil
Phádraig



Geallaimid duit go ndéanfaimid difear millteanach i do shaol agus go bhfágfaimid lorg buan ort a rachaidh chun sochair duit san am atá le teacht

Your St Patrick's journey...

Your choice

Fáilte	3
Cén fáth a roghnófa Ollscoil Phontaiíúil Phádraig?	4
Cén fáth a ndéanfá staidéar ar an Diagacht agus ar an bhFealsúnacht?	8

Your experience

Why Maynooth?	10
What our students and graduates think	12
Support	14
Erasmus+	16

Your future

Welcome to your future	17
What our Alumni say	20
Bachelor's in Theology & Arts (BATH)	21
Baccalaureate in Philosophy (BPhil)	25
Applying to us	26
Labhair Linn	34





Fáilte

Is sainollscoil í Ollscoil Phontaifiúil Phádraig a bhíonn ag plé le léann na diagachta agus le léann na fealsúnachta araon ag leibhéal na fochéime agus na hiarchéime. Ina fhochair sin, reáchtáiltear cláir ghairmiúla chomh maith a bhaineann le ministreacht agus leis an diagacht thréadach, cuir i gcás.

Freastalaíonn mic léinn ó gach cearn den domhan ar Ollscoil Phontaifiúil Phádraig gach uile bhliain maille le mic léinn intíre. Tagann cuid acu ó thíortha eile de chuid an Aontais Eorpaigh: An Ghearmáin; An Fhrainc agus an Pholainn, cuir i gcás. Tagann mic léinn eile ó áiteanna atá níos faide amach. Abraimis: na Stáit Aontaithe; an Áis agus an Afraic gan ach roinnt bheag a lua.

Tá rogha agus togha na múinteoireachta; na n-acadóirí agus na n-áiseanna abhus anseo in Ollscoil Phontaifiúil Phádraig. Cinntíonn blúirí dá leithéid go bhfaigheann na mic léinn s'againne oideachas den chéad scoth agus go n-éireoidh go geal leo sna gairmeacha a roghnóidh siad sa todhchaí. Cuirtear réimse leathan clár ar fáil a bhaineann le hearnálacha éagsúla. Cuirim i gcás: an cúram tréadach; obair forbartha; earnáil an oideachais agus an saol acadúil.

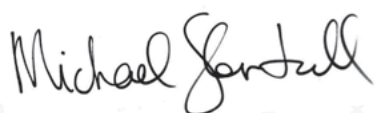
Má roghnaíonn tú Ollscoil Phontaifiúil Phádraig, beidh tú páirteach i bpobal idirnáisiúnta. Beidh tú i measc mac léinn eile ó chian is ó chongar agus tú ag foghlaim faoi stiúir acadóirí ceannródaíocha a chuireann barr feabhais acadúil chun cinn ina gcuid múinteoireachta agus sa taighde s'acusan gach uile lá beo.

Tá clú agus cáil ar Ollscoil Phontaifiúil Phádraig, Maigh Nuad mar ionad barr feabhais ó thaobh na diagachta agus na fealsúnachta de. Tá an baile mór an-chongarach go deo dúinn. Dá bhrí sin, tá na seirbhísí agus háiseanna uilig a bhíonn ag teastáil ó na mic léinn in aice láimhe.

Tá raidhse eolas sa réamheolaire seo maidir leis na nithe seo a leanas: an dámh s'againne; ár suíomh; na cláir a reáchtáiltear anseo; an chomrádaíocht a bhaineann lenár bpobal beag agus an t-atmaisféar oscailte agus suaimhneach.

Cuirim fearadh na fáilte romhaibh uilig. Treoir achomair is ea an réamheolaire seo. Déantar plé ar na deiseanna staidéir atá ar fáil abhus anseo in Ollscoil Phontaifiúil Phádraig.

Má tá tuilleadh eolais uait, féach ar ár suíomh idirlín ag sppu.ie nó tar i dteagmháil lenár bhfoireann theagmhála scoileanna.




An Dochtúir Mícheál Soirteíl, Uachtarán




Cén fáth a roghnófa Ollscoil Phontaiúil Phádraig

Glacaimid cur chuige iomlánaíoch chugainn mar gheall ar an oideachas. Múnlaítear ár mic léinn go hintleachtúil agus go heiticiúil ionas gur féidir leo a bheith ina saoránaigh rannpháirteacha sa tsochaí amach anseo.



Má thugann tú faoi chúrsa linn, ullmhaítear thú chun freastal ar riachtanais an chine dhaonna go fial flaithiúil agus sásamh a fháil san obair sin





The Russell Library contains approx. 34,000 printed works dating from the 16th to the mid-19th century.

Gheobhaidh tú timpeallacht fíorspreagúil in Ollscoil Phontaifiúil Phádraig. Tá atmaisféar láidir idirnáisiúnta le brath san áit. Fós féin, tá comhthimpeallacht chluthar sheascair ann i dtrátha an ama chéanna

Students at St Patrick's Pontifical University will be intellectually challenged while being well supported.

On graduation our students are admired for their confidence and ability to think critically, to tease out important matters, to reason and debate in a thoughtful, intelligent, and authentic manner.

If you are seeking a third level education that places an emphasis on this stimulating approach to broadening your mind and self-development, more so than cramming in facts, then you should consider St Patrick's Pontifical University.

Pobal foghlama atá fréamhaithe i dtraidisiún ársa

St Patrick's Pontifical University is a wonderful place to study for so many reasons. Our campus is steeped in tradition but with state-of-the-art facilities. We are located in the centre of Maynooth, Ireland's only university town. Because we share a campus and facilities with Maynooth University, our students are 'dual citizens' meaning you can enjoy the buzz of a large campus while reaping the advantages of smaller class sizes. Maynooth offers an alternative to the busyness of larger cities but with excellent transport links by road, rail and bus, Dublin is only 30 minutes away.



Bíonn líon beag mac léinn sna ranganna. Deimhníonn sin go dtugtar go leor cúnamh do na mic léinn agus iad i mbun staidéir linn

Making the transition to third level can often be daunting. Leaving behind structures and friendships built up in school to start again in an unfamiliar environment with new people.

At St Patrick's Pontifical University, our class sizes are small. Our students tell us this is a great benefit as they quickly get to know their lecturers and form new friendships with their new classmates.

Smaller class sizes also allow room for more individual attention and deeper exploration of topics in the class. Our lecturers are interested in your success and are truly engaged as part of your overall learning experience. Consequently, our students become part of a learning community and start on a journey leading to lifelong friendships.



Beidh tú i do chéimí dea-oilte iniúil agus cumasach faoi dheireadh do chuid staidéir

Studying at St Patrick's Pontifical University, you will be encouraged to engage critically, so that you can form your own ideas and conclusions. You will become more skilled at expressing yourself and gain the confidence to communicate powerfully and eloquently. You will graduate as a confident, informed, and well-grounded person, capable of making real change in your own life and in wider society.

Oibríonn ár gcéimithe in earnálacha éagsúla: Aбраimis: gairm na múinteoireachta; díolachán agus margaíocht; cumarsáid; caidreamh poiblí; iriseoireacht; forbairt pobail; seirbhísí sóisialta; séiplíneacht agus riarachán paróiste, gan ach roinnt bheag a lua

Campus facilities

While St Patrick's Pontifical University is a small niche university, we share our campus with Maynooth University. This gives our students the flexibility to enjoy the quieter south campus where we are located or avail of all the facilities of the larger north campus where Maynooth University is situated. St Patrick's Pontifical University students have access to all services and facilities across both campuses.



Tá teacht ag ár mic léinn ar na seirbhísí go léir a chuireann Ollscoil Mhá Nuad ar fáil

International Recognition

An internationally recognised university. For more than 200 years, graduates of St Patrick's Pontifical University have made a difference throughout the world. Currently, there are staff originating from as far afield as the United States and South Africa. We are proud of our current diverse student body. Students come from China, Africa, and America. We are active partners in the Erasmus+ programme with links across Europe.

Faculty

Programmes designed for you and grounded in research. St Patrick's Pontifical University is home to one of the largest Theological Faculties in Ireland and Britain. This allows us provide students with internationally recognised expertise in all areas of Theology. Our philosophy department is one of the very few in Ireland and Britain that explicitly engages with the Catholic intellectual tradition. Here, theory and practice, in Ireland and throughout the world, is put to the test.

Opportunities to Study Abroad

The World at your Feet. With exchange agreements with almost 30 recognised universities across Europe, St Patrick's Pontifical University is actively engaged in the Erasmus+ programme. We also welcome international students directly, as well as those who access our Theology courses via Maynooth University.

Some of our students choose to spend a year abroad and graduate with a BATH or BTh International, enhancing both their CV and career prospects.

Cén fáth a ndéanfá staidéar ar an Diagacht agus ar an bhFealsúnacht

Go hiondúil, ní bhíonn an diagacht ag barr an liosta agus mic léinn i mbun machnaimh mar gheall ar chlár ollscoile. Ní iontas ar bith é, leoga féin. I ndeireadh na dála, is beag duine atá fiáin chun na diagachta le linn a n-óige. Mar sin féin, b'fhéidir go mbeadh spéis agatsa inti. Gach seans go bhfuil conair na diagachta i ndán duitse. Déan do mhachnamh air!

An Dochtúir Jesse Rogers, Dámh na Diagachta

What kind of student enjoys theology? You do not have to consider yourself religious, but you would need to be open to the bigger questions in life, to thinking about God and meaning and good and evil. Someone who ends up choosing theology will want to make a positive difference, to help others, and to make the world a better and a kinder place. If you are interested in history, in people and society, in what it means to be human, in literature, in culture, in the world as our common home, then theology could be a good fit for you.

The BATH is a joint Arts Degree with Maynooth University. Students take theology alongside a range of arts subjects. Most of our students are not setting out to become professional theologians. They could be studying German, Business, Sociology, Music, English, Anthropology, Law, Criminology, Geography, or History alongside Theology.

Those combinations open up all kinds of possibilities to grow as a person while being equipped to make a positive difference in the lives of others through a variety of career paths.



The study of philosophy at St Patrick's Pontifical University enjoys a long and august tradition. Philosophy has been taught here since the foundation of St Patrick's in 1795, and it includes amongst its associates (both alumni and staff) such figures as Thomas Hussey (first president and friend of Edmund Burke), Charles William Russell (who translated Leibniz, was a friend of John Henry Newman, and after whom the Russell library is named), Peter Coffey (Neo-scholastic philosopher, student of Mercier, and author of a number of manuals of philosophy),

**Má thugann tú faoi chlár
i nDámh na Fealsúnachta
in Ollscoil Phontaifiúil
Phádraig, déanfaidh tú
mionscagadh ar léann ársa
na fealsúnachta taobh istigh
den traidisiún Caitliceach.
Lena chois sin, rachaidh
tú i ngleic le traidisiúin
mhalartacha fosta.**

**An Dochtúir Gaven Kerr, Cláraitheoir
Acadúil & Léachtóir le Fealsúnacht**

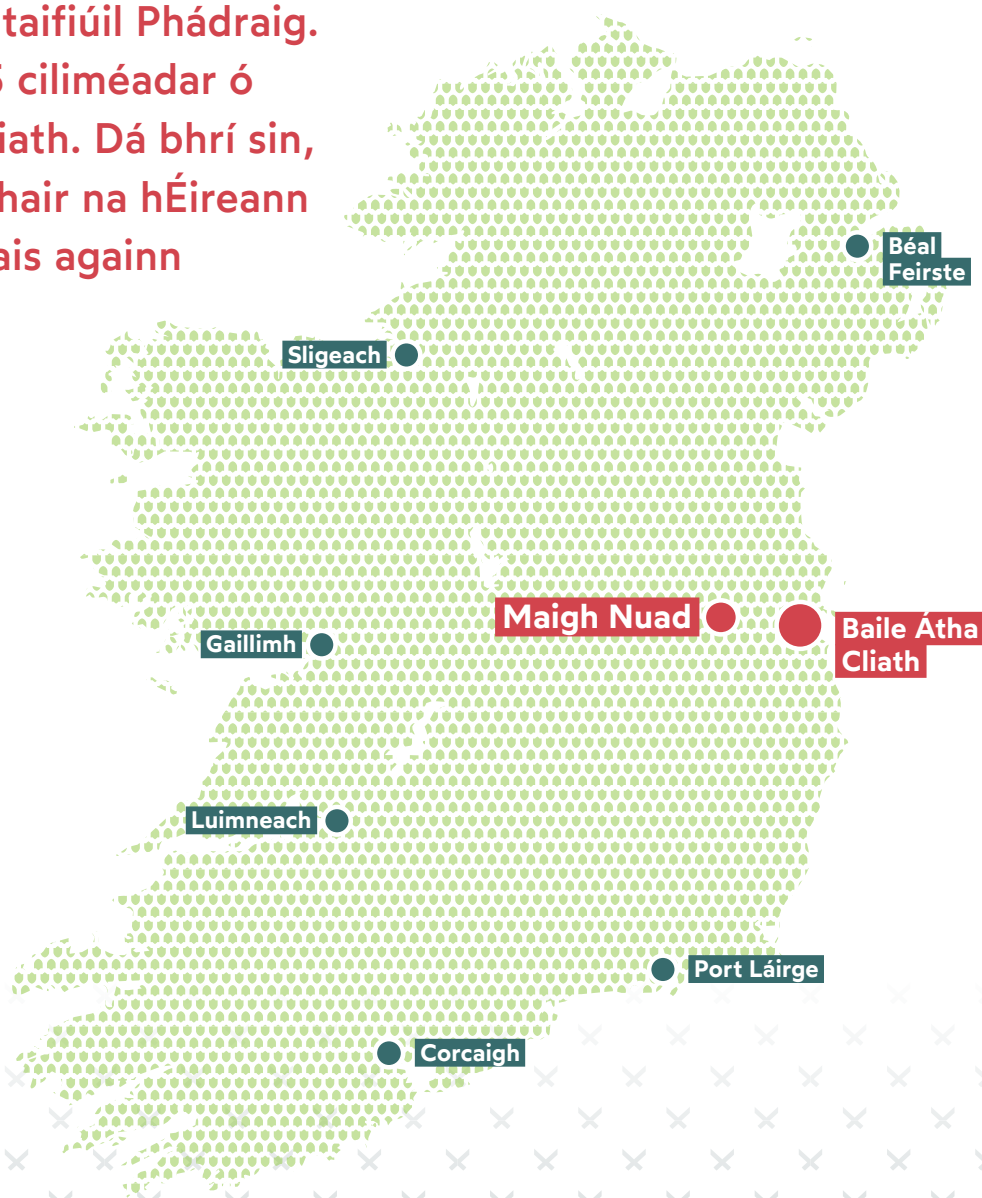
Nicholas Callan (noted scientist and engineer who taught natural philosophy at St Patrick's) along with more recent figures such as Cahal Daly, Desmond Connell, Philip Pettit.

An education in philosophy from St Patrick's will ensure that the student is conversant with key themes and figures in the history of philosophy whilst becoming equipped to make a contribution to on-going concerns in contemporary thought from within a distinctively Christian vision of reality that is dynamic.

The study of philosophy develops critical thinking skills that are useful for many career paths. While certain students go on to an academic career in philosophy, all students are encouraged to become philosophical, by acquiring the skills to build arguments, examine assumptions, and evaluate worldviews.

Why Maynooth?

Gan aon agó, tá suíomh na hollscoile ar cheann de na buntáistí is mó a bhaineann le hOllscoil Phontaifiúil Phádraig. Nílimid ach 25 ciliméadar ó Bhaile Átha Cliath. Dá bhrí sin, tá príomhchathair na hÉireann ar leac an dorais againn



Maynooth is Ireland's only university town. It is home to a vibrant community, rich in heritage and modern conveniences, with excellent transport links across Ireland. With its warm and friendly atmosphere and array of shops, businesses, restaurants and bars, it has something to offer everyone, whether you are looking for culture, nature, or adventure.

The historic town has at either end of the main street, Maynooth Castle and Carton House two former seats of the Dukes of Leinster. The University campus and town complement each other to the point where one acts as an extension of the other.

Treoracha

Ag teacht aniar:

Travel along the M4 in the direction of Dublin, exit at Junction 7 for Maynooth and follow the brown University signs for South Campus.

Ag teacht anoir / ó lár Chathair Bhaile:

Travel M4 Westbound, Exit at Junction 7 for Maynooth, following the brown University signs for South Campus.

Ag teacht ó Aerfort Bhaile Átha Cliath: From the M50, Exit at Junction 7 for M4. From M4 exit at Junction 7 for Maynooth, following the brown signs for South Campus.

Ag taisteal ar chóras iompar poiblí: Exit the Airport onto M1 direction for Dublin City/M50. Exit onto M50 travelling Southbound, from the M50, Exit at Junction 7 for M4. From M4 exit at Junction 7 for Maynooth, following the brown signs for South Campus.

By public transport:

Iarnród Éireann Irish Rail — Maynooth Service from Dublin Connolly — 41 mins



Iarnród Éireann Irish Rail — Sligo/Longford Service — 33mins



Bus Éireann — Route 115 — 41 mins



Dublin Bus — Maynooth served by C Spine routes from the heart of the city



Images by William Murphy - flickr.com/infomatique / CC BY 2.0

What our students and graduates think



“Táim iontach sásta gur thug mé faoi chéim sa Diagacht in Ollscoil Phontaifiúil Phádraig.

Thaitin gach gné den chúrsa liom.

▶ **Gan amhras ar bith, ba é an cinneadh is fearr a rinne mé riamh.”**

Megan Byrne – Céimí le Diagacht (BATH)

“Nuair a chuala mé faoin BATH i dtosach, bhí a fhios agam láithreach bonn go raibh an chéim sin i ndán dom.

▶ **Ní foláir dom a admháil, go raibh an diagacht i bhfad níos fearr ná mar a bhí mé ag súil.”**



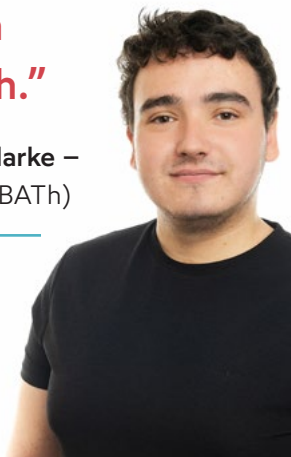
Collette Sherlock – Iníon Léinn (BATH)



“Bhí eispéireas iontach agam in Ollscoil Phontaifiúil Phádraig. Bhí gach duine fíordheas ar fad agus b'éasca cairdeas a dhéanamh. Ina theannta sin, b'fhurasta labhairt leis na léachtóirí de bharr na ngrúpaí beaga sna ranganna.

▶ **Tá muintearas thar na bearta ar an gcampas agus tá atmaisféar cairdiúil seasair ann chomh maith.”**

Mark Paul Behan Clarke –
Céimí le Diagacht (BATH)



“Is féidir le lucht an BATH an dá thrá a fhreastal, go deimhin féin. Tá réimse leathan ábhar sna Dána le roghnú astu.

Fágann sin neart solúbthachta don mhac léinn agus iad sa chéad bhliain.

▶ **Tá ríméad orm gur roghnaigh mé Ollscoil Phontaifiúil Phádraig. Ba é an rogha ceart domsa, gan aon agó.”**

Marysia Lenkiewicz
– Iníon Léinn
(BATH)



“Is é an buntáiste is mó a bhaineann leis an BATH ná gur féidir leat staidéar a dhéanamh ar ábhar sna Dána maille leis an diagacht.

Rinne mé féin staidéar ar an stair mar aon leis an diagacht agus tháinig siad go maith le chéile.



▶ **Tá an diagacht fíospéisiúil go deo agus foghlaimíonn tú rud éigin nua gach uile lá.”**

Shauna Murphy –
Céimí le Diagacht (BATH)

“Sealbhaíonn tú raidhse scileanna inaistrithe agus tú i mbun staidéir ar an diagacht a chuireann go mór le do dhiseanna fostaíochta.

Cuirim i gcás: scileanna cumarsáide; scileanna anailíse agus teicnící réitigh fadhbanna.

▶ **Tá intinn ghrinn ag an gcéimí le diagacht. Ar an mbonn sin, tá siad breá inniúil ionchur uathúil agus fóna a dhéanamh ina ngairmeacha amach anseo.”**

Colm McGoldrick –
Céimí le Diagacht (BATH)





Support

This is a new and exciting phase in students' lives. For many it is their first time living away from home and having to take control of their own lives. As such, we strive to put in place a range of supports to help you on your journey through university life.

Student Health Centre

The Student Health Centre is located in the Student Services Centre on the North Campus. It is a confidential service available to all registered students. For further information on service and opening hours please visit sppu.ie/studenthealthcentre

Sports and Recreation

The numerous sports clubs, together with easy access to excellent on-campus facilities, provide quality opportunities for students to get involved in social, cultural and sporting activities. Facilities include:

Indoor: Three sports halls, fitness centre, free weights room, physical therapy room, racquet-ball court and snooker room. The sports halls provide a venue for most of the indoor clubs practice and competitions, along with aerobics and fitness sessions.

Outdoor: There are five playing fields on the south campus. On the north campus there are three high-quality sand-based turf playing fields, facilitating inter-varsity home games in Gaelic football, Hurling, Soccer, Camogie, Ladies Gaelic football and Rugby. To facilitate club training sessions and internal competitions, there is a FIFA regulation size 3G floodlit synthetic pitch.

Sports Programs: There are over thirty sports clubs active on campus. The clubs are mostly student-run, but several are assisted by professional sports development officers. Facility management and fitness programs are provided by the Sports Department.

The University Library

The Library is a key resource for students. A team of dedicated staff provide all students with a high quality service in a friendly and student-centred environment. The library offers space for eight different learning styles, from the collaborative to totally silent spaces. Staff are always on hand to deal with any queries students may have. The eBook collection and almost 50,000 journals can be accessed by registered students via the web from anywhere in the world. Kindle readers are available to borrow and PCs and laptops are available throughout the library. More information about the library can be found at sppu.ie/library.



Student Accommodation

The Residence Office offers a comprehensive service to students of the University. Accommodation is available in apartments, hostels, lodgings and private rented houses. Preferential status will be given to Theology students seeking campus accommodation.

To express your interest in campus accommodation please email admissions@spcm.ie. For more information, please go to sppu.ie/accommodation.

Erasmus+

international study opportunities

With exchange agreements with almost 30 recognised universities across Europe, St Patrick's Pontifical University is actively engaged in the Erasmus+ programme. You can spend a year in a university of your choosing in Europe to gain valuable life-skills and international experience to help you develop personally, professionally, and academically and to succeed in today's world. We also welcome international students directly, as well as those who access our Theology courses via Maynooth University. Students of St Patrick's Pontifical University who choose to spend a year abroad graduate with a BATH or BTh International, enhancing both their CV and career prospects.



▶ "Going to Salamanca for my Erasmus year proved to be one of the best years of my life. The experience will retain a special place in your heart that will last a lifetime."

Yvonne Myles – University of Salamanca, Spain, Graduate BATH, International



▶ "Coming from a small town in the Italian Alps, I had been enchanted by the Neo-Gothic architecture of the St Patrick's campus. My final year at St Patrick's Pontifical University was certainly the most rewarding and memorable."

Stefano Zordan – Graduate, BATH



Welcome to your future

University is meant to train for life and taking Theology alongside another Arts subject will certainly do that. You will develop skills such as critical thinking, good communication and the ability to explain and debate issues, clarity of thought and working with complexity.

You will not only learn valuable skills, but also explore what is beautiful and what is good.





▼

The one common thread that emerges among our graduates is their desire to make a difference to the world

▲

St Patrick's Pontifical University students become alert to ethical issues and have a greater understanding of the viewpoints of others. Our hope is that they become committed to the common good and reflect on how they can contribute to society wherever their future takes them.

A degree from St Patrick's Pontifical University lays the groundwork for a wide range of careers. Our graduates become teachers, journalists, chaplains, pastoral workers, academics, and entrepreneurs. They are engaged in community development, administration, business, research, postgraduate study, parish and youth work.

Regardless of what future career path you chose, there are a number of transferable skills necessary to succeed in any role. In addition to technical aptitude, those who flourish in their careers exhibit creativity, critical thinking and problem solving, the ability to negotiate and be flexible, as well as on relationship skills and emotional intelligence.

During your time with us, you will acquire transferable skills that will stand to you regardless of your career choice, skills such as:

- Confidence in written communication and verbal expression
- Greater understanding of other viewpoints
- Exploration of ethical questions from various perspectives
- Awareness of how history has influenced today's world
- Critical thinking and philosophical inquiry
- Understanding of how religious views have often shaped society
- Engagement with the big questions of life



Our graduates pursue many subject choices and career paths. The one common thread that emerges is their desire to make a difference to the world or the common good. Their time spent studying at St Patrick's Pontifical University helps strengthen their belief in working for the good of others.

Future Careers that our graduates take up include:

- Teaching
- Marketing
- Business
- Academia
- Research
- Communications
- Publishing
- Journalism
- Pastoral Work
- Public Relations
- Social Services
- School Chaplaincy
- Public/Private Sectors
- Administration
- The Civil Service
- Community Development
- Religious Education
- Research Administration
- Third Level Chaplaincy
- Healthcare Chaplaincy
- Parish Administration
- Finance

What our Alumni say

“Tá cuimhní geala agam ar Ollscoil Phontaifiúil Phádraig. Bhí craic ar dóigh againn. Chuir an diagacht go mór le mo dheiseanna gairme.”



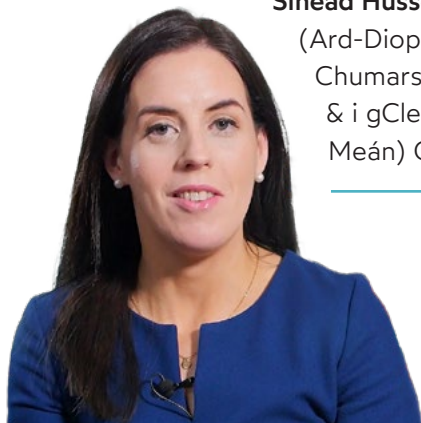
Jane Mellett - Oifigeach
Laudato Si’ le Trócaire
(BATH, MTh)

“Tá atmaisféar faoi leith in Ollscoil Phontaifiúil Phádraig, go deimhin féin. Tá comrádaíocht as cuimse san áit agus fásann tú mar dhuine chomh maith.”



Ger Brennan
(BATH, MTh)
Bainisteoir Bhaile
Átha Cliath

“Tá cultúr ar leith in Ollscoil Phontaifiúil Phádraig, a chuaigh i bhfeidhm go mór orm. Tá dearcadh dearfach ann i leith na foghlama. Is áit mhór léinn é.”



Sinéad Hussey
(Ard-Diplóma sa
Chumarsáid Chríostaí
& i gCleachtas na
Meán) Craoltóir RTÉ

“Cuirtear ar chumas na mac léinn páirt a ghlacadh i ndíospóireachtaí mar gheall ar cheisteanna móra ár linne.”

Liam McGroarty (MTh)
Bainisteoir Forbartha
Straitéisí - UEFA





Bachelor's in Theology & Arts (BATH)

NFQ: Level 8

Course code: MU001

Award: Honours Bachelor's Degree

Awarding Body: Jointly awarded by St Patrick's Pontifical University & Maynooth University.

Three years of study, 180 credits, leading to a Double Major (equal study of two subjects) award. As Pope Francis observed, 'everything is closely interrelated' and 'the fragmentation of knowledge and the isolation of bits of information can actually become a form of ignorance, unless they are integrated into a broader vision of reality' (Laudato Si', §137-38). This programme is designed for those who wish to combine the study of Theology with the study of a subject in the Arts.

Students take Theology in the Faculty of Theology in St Patrick's Pontifical University and for the Arts subject they follow the regular BA courses of the Faculties at Maynooth University.

As with all CAO Programmes, points vary from year to year. In recent years, the BATH programme entry points have been in the 290-300 range, but actual points in any given year is dictated by the CAO process in that year.

Course Aims

Theology This course aims to provide students with a solid intellectual formation in Theology. The scope of the course is wide, covering the range of the main theological subjects, so that students are introduced both to the breadth of the Christian tradition and to the variety of questions raised for Theology at the present time. Students of the course should develop a well-informed understanding and a deep personal appropriation of the Christian faith and other world religions and beliefs.

Arts These subjects offer students the opportunity both to broaden and deepen their knowledge of subjects they have already studied and to embark on new subjects of study. The variety of disciplines available is part of the richness of the Arts, but what all the subjects have in common is that each, in its own way, requires students to consider and reassess the values by which society operates in the modern world.

The Theology and Arts student therefore is someone with an enquiring and broad-ranging mind who will be well equipped to take his or her place in professional, social and community life.

First-year students take THREE subjects (60 credits in total); Theology (30 credits) plus two other Arts subjects (15 credits each) from the 5 groups below. No two subjects can be taken from the same group.

Second and third year students take Theology (30 credits each year) and one Arts subject (30 credits each year) from these 5 groups.

Optional 1st year only Critical Skills (15 Credits) available to take with all subject combinations.

-
- Group 1** Geography, German (beginner or intermediate), Law, Mathematics (Pure), Philosophy
 - Group 2** Business (International, Management or Marketing), Criminology, History, Music (extra 15)*
 - Group 3** English, International Development, Mathematical Studies
 - Group 4** Anthropology, Economics, Finance, Music Technology, Nua Ghaeilge
 - Group 5** Computer Science, Music, Sociology, Spanish (beginner or intermediate)
-

Further details on individual Arts subjects are available from the Admissions Office at Maynooth University. A limit may be placed on the numbers taking a particular subject.

**(extra 15) - This indicates the timetable group of the extra 15 credits if taking 30 credits of the subject.*

Theology topics

Modules may vary from academic year to year, below is a representative sample of the topics taught.

Systematic Theology

- Introduction to Christianity
- Foundations in Catholic Theology I
- Foundations in Catholic Theology II
- Christianity & World Religions
- Christian Anthropology and Spirituality

Moral Theology

- Introduction to Christian Ethics: Roots, Renewal and Relevance for Today
- Catholic Social Ethics
- No Escaping Fundamental Questions
- Contemporary Issues in Bioethics

Sacred Scripture

- Moses, Jesus and their Companions: A Narrative Introduction to the Bible and its Worlds
- Prophetic Literature of the Old Testament
- The Human God
- "Full of Your Creatures" Ecology and the Old Testament

Philosophy

- Philosophy of Religion and Secular Thought

Faith and Culture

- Christian Faith and the Dynamics of Culture in a Secular Age

Liturgy

- Christian Sacraments

Choice of electives in year 2 & 3 – Students choose an elective up to 5 Credits.

Further information on choices available at sppu.ie/courses/bachelors-in-theology-and-arts-bath

Further module options are available in year 2, details of which are communicated by the programme director.

Optional 1st year only Critical Skills (15 Credits) available to take with all subject combinations.





Bachelor's in Theology (BTh)

NFQ: Level 8

Course code: MU002

Award: Honours Bachelor's Degree

Awarding Body: St Patrick's Pontifical University

The Bachelor's in Theology (BTh) is an immersion into history and the greatest questions continually posed by humanity. It is designed for students who desire an intellectual journey, which entails reading the great books from the Christian intellectual tradition, from Plato and Aristotle, to Augustine, Aquinas, Julian of Norwich, Dorothy Day, and Edith Stein. Academically rigorous and intellectually engaging, this three-year full time degree provides students with a holistic formation in theology, especially within the Catholic theological tradition. Learners delve into all major theological subdisciplines, including but not limited to the study of Scripture, moral theology or ethics, and systematic theology. Students receive a grounding in philosophy, languages, and the history of Christian thought and culture.

Unique to this programme is a series of Primary Text Seminars in which students study classic theological texts from antiquity to the present day, and discover the perennial theological questions that have shaped Christianity over the centuries.

As with all CAO Programmes, points vary from year to year. In recent years, the BTh programme entry points have been in the 290-300 range, but actual points in any given year is dictated by the CAO process in that year.

Course structure

Modules may vary from academic year to year, below is a representative sample of the topics taught.

Introduction to Theology

- What is Theology?

Systematic Theology

- Revelation, Faith & Culture
- The Christian God
- Christianity & World Religions
- Christology & Redemption
- Theological Anthropology
- Ecclesiology
- Sacramental Theology: An Introduction
- Missiology, Ecumenism and Interreligious Dialogue

Moral Theology

- Introduction to Christian Ethics: Roots, Renewal and Relevance for Today
- Justice, Human Rights and Catholic Social Teaching
- Ethics of Love and Life
- Contemporary Ethical Issues in a Global Society

Sacred Scripture

- Moses, Jesus and their Companions: A Narrative Introduction to the Bible and its Worlds
- The Eagle's Vision An Introduction to the Narrative, Christology, and Theology of the Fourth Gospel
- The Word of the Lord through the Prophets
- The Human God
- Paul Apostle to the Nations
- Wisdom Literature & Psalms

Philosophy

- Introduction to Philosophy
- Philosophy of Religion and Secular Thought

Languages

- Introduction to Ecclesiastical Latin
- Intermediate Ecclesiastical Latin
- Introduction to Biblical Greek
- Introduction to Biblical Hebrew

Ecclesiastical History

- History of the Early Church
- History of the Medieval Renaissance and Reformation Church
- History of the Church in the Modern Age

Primary Text Seminars

- Year 1: Primary Text Seminar I: Introduction (Justin Martyr, Augustine, Anselm, Aquinas, Newman)
- Years 2 and 3: Primary Text Seminar II (Diverse texts on topics ranging from Christian spirituality to the Human Person)

Liturgy

- The Celebration of the Eucharist
- Christian Sacraments

Faith & Culture

- Christian Faith and the Dynamics of Culture in a Secular Age

And a choice of electives in year 2 & 3.

Choice of electives available at sppu.ie/courses/bachelors-in-theology-bth



Baccalaureate in Philosophy (BPhil)

Course code: MU004

Award: Honours Degree

Awarding Body: St Patrick's Pontifical University

The Baccalaureate in Philosophy (BPhil) is a full-time Level 8 award. The programme provides an opportunity to study Philosophy in the Christian and Western intellectual traditions. The BPhil is included in CAO from 2024.

Course Aims

- Foster knowledge and understanding of key areas of Philosophy and the Christian intellectual tradition
- Develop the capacity to make informed, evaluative judgements about the arguments, approaches and methods within the different areas of the philosophical and Christian intellectual traditions
- Foster the skills of clear logical thought and presentation, careful analysis of ideas and imaginative deployment of argument
- To develop students' ability to fashion thoughts and concepts with precision, rigour and clarity to enable students to assess the source and nature of values
- Develop appreciation of some fruitful interconnections between Philosophy and other areas of intellectual thought
- Develop intellectual curiosity and the capacity for independent thought and critical reflection.

Careers

Philosophy graduates have a number of transferable skills, including:

- Self-motivation and the capacity for independent study & thought
- The ability to prioritise work and meet deadlines
- Flexibility and creativity
- Critical thinking
- The capacity to identify, absorb and sift complex information
- Teamworking
- Openness to new ideas

Aside from an academic career in philosophy, philosophy graduates typically pursue careers in sales, marketing and related associate professions, including business, research, administration and the finance sector.



Applying to us

Irish, UK and EU applicants

Application is made through the Central Applications Office (CAO). Application literature is available from second-level schools or from CAO, Tower House, Eglinton Street, Galway. Applicants may also apply online at cao.ie

Contact: Use the *Contact Us* facility on the CAO website.

Tel. **+353 (0)91 509 800**

An application fee is applicable when applying through the CAO.

You can find our programmes under:

- CAO code MU001 – Bachelor's in Theology & Arts (BATH)
- CAO code MU002 - Bachelor's in Theology (BTh)
- CAO code MU004 - Baccalaureate in Philosophy (BPhil)

As with all programmes on CAO, points vary from year to year. In recent years the points band has been:

- BATH and BTh CAO entry has been between 290-300 points but points in any given year are determined by the CAO process in that year.
- BPhil included in CAO from 2024 (historical points not available)

Age Requirements

Students must normally have attained the age of seventeen years by 15th January following entry to the University. Where a candidate below that age seeks to enter the University, special application must be made to the University President, St Patrick's Pontifical University.

Admission Requirements

Applicants under 23 years of age on 1st January of the year of proposed entry must meet matriculation requirements as follows:

- Leaving Certificate or equivalent with a minimum of two recognised subjects at Higher Level Grade H7 and four at Ordinary or Higher Level Grade 06.
- Passes in Irish, English and another language are required.
- The subject Mathematics (Leaving Certificate Foundation level) will be accepted for matriculation purposes, but points will not be awarded for it.
- The subject Gaeilge – Bonnleibhéal (Irish – Foundation Level) will not be accepted for matriculation or points purposes.

LCVP

The following arrangements will apply to the Leaving Certificate Vocational Programme (LCVP) Link Modules:

- points will be awarded as follows: 66 points for a distinction, 46 points for a merit, and 28 points for a pass.
- applicants will have the opportunity to use their points allocation for the Link

Modules as one of their six subjects for the purposes of calculating points.

- the Link Modules will not qualify as a subject for matriculation purposes.

Applicants who satisfy the above requirements are placed in order of merit on the basis of the common points system and places are allocated according to the highest preference, in their application through CAO, to which their points entitle them.

Mature Applicants

Candidates 23 years of age or over on 1st January in the year of proposed entry who do not fulfil ordinary entry requirements may apply for matriculation on the basis of mature years. Applications must be made through the CAO by 1st February (cao.ie).

Late applications will be considered up to the late CAO closing date of 1st May. Please contact the Admissions Office before submitting a late application or before entering our courses on your CAO application using the Change of Mind Facility.

An application fee is applicable when applying through the CAO.
All mature applicants will be interviewed.

Tel: **+353 (0)1 708 4772** Email: admissions@spcm.ie

A Level Applicants

You must apply through the Central Applications Office (CAO) if you are presenting A Levels. As well as achieving the required points, you must have passes in six recognised subjects at GCSE (grade A, B or C) or AS Level (grades A-E) or A Level (grades A-E), including grade C or better in two subjects at A Level (AE or BD is seen as equivalent to Two grade Cs for this purpose).

In all cases, applicants require at least GCSE grade C in English. In addition, you must have a pass in Irish and/or a third language at GCSE (minimum grade C), AS Level (minimum grade E) or A Level (minimum grade E). Some applicants may claim an exemption from Irish.

For details contact: The National University of Ireland, 49 Merrion Square, Dublin 2.
Tel: **+353 (0)1 439 2424** or visit nui.ie.

Applicants from Northern Ireland

Free funding is available from Student Finance NI.
For more information, visit www.studentfinancenl.co.uk.

FETAC

Holders of FETAC qualifications are welcome to apply to our programmes. Application is made through CAO. Applicants must have obtained a MAJOR award. Component Certificates will not suffice. A major award may be accumulated over more than one academic year.

In such cases, it is the responsibility of the applicant to apply to FETAC for a major award where courses are taken over more than one year. A minimum of five distinctions are required for all courses. While a major award may be achieved over a number of sittings, the results that a student achieves in a single sitting (i.e. between 1st August - 31st July) are used for scoring purposes. The total maximum score that can be achieved is 400 points.

The score is based on achievement of the major award, i.e. a total of 120 credits, multiplied by the grade score of individual components. Grade scores for component awards are as follows: 3.333 points for a distinction; 2.222 points for a merit; 1.111 point for a pass. As the number of FETAC places available will be limited, those places will be allocated on a competitive basis based on the student's score. Where more than one student has the same score, students will be ranked on a random basis by the CAO.

Entry to all programmes will be considered for holders of one of the awards listed on our website sppu.ie and who have obtained at least 5 distinctions.

Occasional Applicants

Applications are welcomed from candidates who wish to study on an occasional basis. Occasional students may choose modules from our undergraduate degree programmes. The list of modules can be viewed in our Kalendarium sppu.ie/occasional-studies and application forms can be downloaded from our website or by contacting the Admissions Office.

Applicants from outside the Republic of Ireland

International / Non-EU applicants from outside the Republic of Ireland

Applicants are to apply by the date specified alongside each course. sppu.ie/international or email admissions@spcm.ie.

Points will be calculated on the basis of:

- 4 subjects at A Level, or
- 3 subjects at A Level, or
- 3 subjects at A Level plus a different fourth subject at AS Level.

All subjects carry equal points. Points for A Level subjects must be obtained in one exam sitting. AS Level points must be for different subjects to those taken at A Level and may be carried over from a previous sitting. Minimum Entry Requirements and course requirements may be satisfied by an accumulation of subjects over more than one year.

Visa Applications

It is vital that international students begin the visa application process as soon as possible. Please be aware that students who arrive late may not be allowed to start the programme.

Further details of what you should consider in advance of application including:

- English Language requirements
- Visa applications
- Cost of living in Ireland
- Medical Insurance
- Erasmus+ programme

and more are available on sppu.ie/international

Fees

MU001 & MU002 - These Programmes are covered under the free fees initiative. Students will be required to pay the following amounts: SUSI (100%) Grant holders pay €150 prior to registration. SLISI (50%) Grant holders pay €900 prior to registration and €750 in January. Non Grant holders pay €1650 prior to registration and €1500 in January. For further queries please contact fees@spcm.ie or visit sppu.ie/fees-and-funding.

MU004 is currently not part of the free fees initiative. For further information please contact fees@spcm.ie or visit sppu.ie/fees-and-funding.

Entrance Scholarship

The Entrance Scholarship is automatically awarded and is available for students who have obtained the following in their Leaving Certificate, calculated from six subjects in one sitting, who have matriculated (passed English, Irish and a third language): Students who have obtained 500 points or more, in the last 5 years, are awarded €500.

For students presenting GCE A Levels the awards are based on achieving points from three/four subjects in GCE A levels. The award is for one academic year following the student's admission to the University, payable in two instalments — one in November and one in February (subject to the student remaining in good standing with the University). Campus accommodation is not included. There is no need to apply for this scholarship — it is automatically awarded to incoming first year students who meet the requirements.

O'Faich Scholarships for Northern Ireland Students

Five scholarships available for lay students from Northern Ireland taking the BATH in Theology and Arts. The scholarships are valued at €1,500 and includes the offer of campus accommodation. See website for application forms and closing dates.

Student Assistance Fund (SAF)

The Student Assistance/Access Fund is jointly sponsored by the European Social Fund and the Irish Government. It is available for students who require additional financial support to enable them to benefit fully from their third level studies. Registered students do not necessarily need to be grant holders to apply for funding. It simply offers a limited amount of financial support to students who experience financial difficulties related to the costs of their studies. The funding is available to all EU registered students of St Patrick's Pontifical University.

DARE

Disability Access Route to Education

St Patrick's Pontifical University has close links with Maynooth University (the National University of Ireland, Maynooth). The two Universities share the same campus and facilities. Maynooth University's Access Office caters for students of both Universities.

The Disability Access Route to Education (DARE) is a third level alternative admissions scheme for school-leavers whose disabilities have had a negative impact on their second level education. Before submitting a DARE application, you should read the DARE Application Guide & Workbook and discuss this with your parents, guardians or guidance counsellor. There are other admissions routes for mature and FETAC applicants: further information is available in this prospectus and on HEI websites.

Applicants applying for DARE must:

- Be under the age of 23 as of 1st January.
- Apply to CAO by the specified deadline in any given year. Check cao.ie for deadlines and further information.
- Disclose your disability and/or specific learning difficulty in your CAO application and fully and correctly complete Section A of the Supplementary Information Form (SIF) before the deadline specified on the CAO website.

If you wish to be considered for the DARE scheme you must answer yes to question 1 on Section A of the fully completed SIF by the deadline specified on the CAO website.

- Download Section B of the SIF (Educational Impact Statement), have it completed by your school and returned to CAO to arrive before the deadline specified on the CAO website.
- Download Section C of the SIF (Evidence of Disability), have it completed by the appropriate medical professional (only if you do not already have a report verifying your disability) and returned to CAO to arrive before the deadline specified on the CAO website.

In place of Section C, applicants with a specific learning difficulty or dyspraxia are asked to provide a full psycho-educational assessment completed by an appropriately qualified psychologist. In addition, applicants with dyspraxia must provide documentation from an occupational therapist, neurologist, or physiotherapist.

NOTES: DARE has specific requirements for Section C (Evidence of Disability) in relation to the Medical Consultant/ Specialist who must verify your disability, the age limit on reports and the documentation required. For further information on DARE see accesscollege.ie.

Condition of a DARE offer

Applicants who receive a DARE offer must register with the Disability Office and agree on a schedule of meetings with the service. Details of post admission supports for DARE entrants can be found on sppu.ie/access-routes.

Further Information

More information on DARE is available from your School Guidance Counsellor or from the Maynooth University Access/ Disability Office. Information can also be found on accesscollege.ie, cao.ie, sppu.ie/access-routes.

HEAR

Higher Education Access Route

The Higher Education Access Route (HEAR) is a college and university scheme which offers places on reduced points and extra college support to school leavers from socio-economically disadvantaged backgrounds who are resident in the Republic of Ireland. HEAR has been established by a number of Higher Education Institutions based on clear evidence that socio-economic disadvantage has a negative impact on educational achievement at school and progression to higher education. School leavers who provide satisfactory evidence relating to their socio-economic circumstances may compete for a quota of places allocated to applicants on a reduced points basis. As the minimum entry and subject requirements may differ between colleges and courses, applicants should check the requirements of each preference listed on your CAO form.

Who should apply to HEAR?

School leavers from socio-economically disadvantaged backgrounds, who are under the age of 23 as of 1st January and who are resident in the Republic of Ireland, may apply to HEAR. Mature and FETAC applicants have different admission routes and you can get further information on these routes from our website sppu.ie.

How to apply to HEAR

- Apply online to CAO by the published deadline.
- You must indicate in your CAO application that you wish to apply for the HEAR scheme and you must fully and correctly complete all elements of the HEAR form (the HEAR form is a part of your CAO application) before the closing date specified on the CAO website.
- Submit evidence in support of your application to arrive at CAO no later than the closing date specified on the CAO website. HEAR applications can only be made online at www.cao.ie. More information on HEAR is available from your school Guidance Counsellor and at accesscollege.ie.

Condition of a HEAR offer

Applicants who receive a HEAR offer must attend an orientation programme before the first semester. Applicants who accept places in St Patrick's Pontifical University through HEAR are offered a variety of academic, personal and social supports while studying at third level. Details of post-admission supports for HEAR entrants can also be found on accesscollege.ie and sppu.ie/access-routes.

Further Information

More information on HEAR and DARE is available from your School Guidance Counsellor or from the Maynooth University Access/ Disability Office. Information can also be found on accesscollege.ie, cao.ie, sppu.ie/access-routes and sppu.ie

Additional Services

Academic Advisory Office

The Academic Advisory Office functions as a convenient first point of contact for students who wish to seek advice or assistance with their general experience of university life. The office provides an ombudsman-like role for students who may be encountering difficulties in their programme of study.

The mission of the Academic Advisory Office is to provide high quality academic advice and guidance to enable all students to reach their full academic potential. Academic Advisors are here to help you to explore, identify and achieve your academic goals and to become an independent, self-directed learner and decision maker.

The office is an open, welcoming and inclusive environment that nurtures and empowers all students through its programmes, services and initiatives.

Career Development Centre

The Career Development Centre provides a service that is student focused, professional and informative offering information, advice and guidance on areas such as career options, further study and employment opportunities. We encourage you to make use of our resources throughout your time at university, and to begin working on your career plans early on.

We offer:

- Career presentations
- Drop-in Helpdesk daily
- One-to-one guidance meetings with a careers adviser
- Career Development Centre Website (sppu.ie/careers)- useful resources including information on generating career options, getting into your chosen career, tips on job-search and interview techniques, job listings, sample CVs and online Careers Interest Tests.
- Careers Information Room with free takeaway material.
- Graduate recruitment/employer activities, including on-campus presentations and information stands.

For further information on the Career Development Centre, visit sppu.ie/careers.

Counselling Service

The Student Counselling Service is a professional counselling service provided on campus to all registered students of the University. The Service is strictly confidential and is free of charge.

Counselling offers a confidential space to discuss in private any concerns that may be impacting on your academic performance or personal health and well-being.

All contact with the Service is by appointment only. If you would like to speak with a counsellor please contact us by telephone on **+353 (0)1 708 3554**

We are located on the Top Floor of the Student Services Centre and can offer a face-to-face appointment or a phone consultation depending on your circumstances. Self-referral is welcomed and encouraged.

Mentoring Service

A voluntary mentoring service exists for first year students. It is a resource that is intended to facilitate the student's transition from second level to third level education. The mentor will provide advice and encouragement on one's overall approach to and organisation of one's first year studies.

Crèche

Maynooth University Crèche is a modern, purpose-built crèche in the heart of the north campus, located next to Rye Hall. We care for children aged 1 year to school going age. We are Tusla registered with qualified staff. ECCE and NCS schemes available for qualifying parents. Tel: **+353 (0)1 708 3319**.

Parking Permits

Designated permit parking is now compulsory in the University. Permits may be purchased online. For more information consult our website **sppu.ie**.

Chaplaincy

The Chaplain is available in the Arts Block in the North Campus and offers appointments and drop-in facilities. Chaplaincy is here to support you, offering a friendly non-judgemental ear whenever needed and is here for those of all faiths and none. Chaplaincy organises weekly & monthly events to facilitate student engagement & build community. If you're interested in getting involved, please email **chaplaincy@mu.ie** or call **+353 (0)1 708 3469** for more information.

Labhair Linn

Má tá fonn ort tuilleadh a fhoghlaim fúinn, is féidir leat dul i dteagmháil lenár dteagmhálaithe baile is scoile chun do chuid ceisteanna a phlé.

Is féidir leat labhairt leo ar an nguthán nó tig leat cruinniú Teams/Zoom a shocrú, más maith leat.



Ruth Daly

T +353 (0)87 162 3379

E ruth.daly@spcm.ie



Rachel McHugh

T +353 (0)87 297 6514

E rachel.mchugh@spcm.ie

Cuairt Scoile

An treoirchomhairleoir scoile thú? Is féidir le ball den fhoireann cuairt a thabhairt ar do scoil agus labhairt leis na daltaí mar gheall ar ár gcláir.

Má tá tuilleadh eolais uait, is féidir leat dul i dteagmháil le Rachel nó Ruth.



Disclaimer: The information contained in this publication is intended as a guide for those seeking admission to St Patrick's Pontifical University and does not constitute a contract or any terms thereof between the University and any intending applicant or any third party. Neither is it intended to give rise to legal obligations of any kind on the part of the University or its employees. The University reserves the right at any time, or from time to time, to cancel, revise, amend, or alter programmes of study and academic regulations. The University is not responsible for and shall not be bound by any errors in, or omissions from this publication.



Ollscoil Phontaifiúil
Phádraig

Coinnigh i dTeagmháil Linn

Oifig na nIontrála,
Ollscoil Phontaifiúil Phádraig,
Maigh Nuad,
Co. Chill Dara

T +353 (0)1 708 4772
E admissions@spcm.ie

Cláraigh anseo lenár nuachtlitir a fháil.
sppu.ie/newsletters

sppu.ie

