

Centre for Mission & Ministries
Prospectus



St Patrick's
Pontifical University



Welcome	3
Why choose St Patrick's Pontifical University	4
Why study with us	6
Maynooth – The perfect town for study	8
What our Alumni think	10
Centre for Mission & Ministries	12

Our Programmes

Diploma in Church Music	14
Diploma in Pastoral Ministry	15
Master's in Liturgical Music	16
Higher Diploma in Youth Ministry and Spirituality	17
Diploma in Youth Ministry and Spirituality	18
Pastoral Liturgy Diploma /Higher Diploma(Blended Learning)	19
Diploma in Pastoral Theology	20
Higher Diploma in Pastoral Theology	21
Master's in Theology (Pastoral Theology)	22
Higher Diploma in Pastoral Theology (Healthcare Chaplaincy)	23
Master's in Theology (Pastoral Theology, Healthcare Chaplaincy)	24
Professional Certificates in Catholic Religious Education and Theological Studies	25
Diploma in Diaconal Studies	26
Collaborative Programmes	27
CMM Online	28

Student Support	29
Scholarships	30
Applying to us	31



Welcome

As you consider your future in ministry or service, I am delighted to introduce you to our suite of awards. The Centre for Mission and Ministries at the Pontifical University is dedicated to equipping students for meaningful, transformative roles within the Church and Society. The Centre embodies the Pontifical University's name. The word pontifical, as you may know, comes from pontifex, or "bridge-builder."

The Centre aims to build bridges—between faith and action, tradition and innovation, and personal calling and community needs.

The programmes at the Centre are designed to prepare you for various ministries. Each path offers a blend of rigorous academic study and practical, hands-on experience, allowing you to develop the knowledge, skills, and compassion essential for impactful ministry. Guided by experienced faculty and enriched by a vibrant, supportive community, students here receive personalised attention within a dynamic learning environment.

As you read through this prospectus, consider how your unique gifts and aspirations align with the opportunities offered at our Centre. Here, you will find not only a place of learning but a community committed to the work of faith in action. We look forward to helping you bridge the gap between aspiration and service, bringing your vocation to life.



Rev Dr Michael Shortall, President



Why choose St Patrick's Pontifical University



Discover enriching programmes and a supportive community at St Patrick's.

- Practice focused programmes
- A supportive learning community
- World class facilities
- Global reputation
- Deep spiritual and human formation
- Expert mentoring and supervision

A community of learning that draws on a long and distinguished tradition of scholarship and pastoral practice

John Paul II
Library



Our staff are friendly and approachable and give personal care and attention to each student

What we offer

St Patrick's Pontifical University offers a range of internationally recognised part-time, full-time and blended learning programmes taught by leading theologians and philosophers from our beautiful, historic campus in Ireland's only university town.

Diploma and Higher Diploma and Master's programmes offering specialised education and formation in the fields of Theological Studies, Pastoral Ministry, Healthcare Chaplaincy, Youth Ministry, Liturgy, and Liturgical Music.

Who are these programmes for?

Programmes within our Centre for Mission and Ministries appeal to a wide range of adults, from different ethnic, religious, vocational, and academic backgrounds. Teachers seeking to specialise in Theology; Priests and Religious pursuing ongoing formation and professional development; persons in caring professions - like Nursing, Social Work, and Youth Work – discerning a transition to faith-based ministry and chaplaincy; singers and musicians who wish to deepen their musical competency for the liturgical environment; those engaged in community- and youth-based ministries or administration who wish to upskill and gain a qualification to strengthen their professional practice.

These programmes aim to support and develop a wide diversity of callings and giftedness. Our graduates gain proficiency in attending to the complexity of human experience, the challenges within our contemporary world, and the art of effective communication. They continue to make a valuable contribution to the communities and organisations within which they work, for instance in hospital, educational, and prison chaplaincy, journalism and broadcasting, and faith-based agencies and communities.

If you are looking to reorient your profession, enrich your faith life, or develop your ministerial competency; if you are searching for a meaningful occupation that will enable you to serve others and make a difference in your local community; if you desire to integrate your faith with your life and work; or if you feel ready for the challenge of personal, spiritual, academic, and professional growth, you should consider a programme from our Centre for Mission and Ministries.



Why study with us

Learn and grow alongside experts in Theology and related disciplines, and experienced practitioners both on campus and in the field. Our programmes are carefully structured to provide integrated formation for the flourishing of learners as whole persons and the development of their professional practice.

With the accumulation of experience, learners will have the opportunity to learn and grow, not only in their own sense of identity, but also in trust and recognition of others – lay, religious, and ordained – in the service of the Christian mission, in their own context, according to the distinctiveness of their own vocation.



▶ **“St Patrick’s Pontifical University’s Centre for Mission and Ministries is a place of learning, practice, and life, or in the words of St Benedict, “a school of the Lord’s service”. The tools of good works for ministry, tested and tried through formation within the academic community, form and equip disciples for engagement with the contemporary world”**

Dr Luke Macnamara OSB,
Acting Dean of Theology

▶ **“We take seriously Jesus' challenge to be salt and light, recognising that we can only be so to the extent that our imaginations and actions are shaped by the Gospel. By taking seriously both academic and formational aspects, CMM programmes aim to equip people for effective ministry in church and society.”**

Dr Jessie Rogers,
Director of Centre for Mission & Ministries



▶ **“The Master's in Liturgical Music programme offers students an opportunity to engage more deeply with the music of the Roman Rite, from its roots in plainchant to its expression in a contemporary vernacular context, whilst developing their own particular skills as singers, organists or composers.”**

Dr John O'Keeffe,
Director of Sacred Music



▶ **“The range of pastoral programmes offered invite students into the exciting and evolving conversation that is practical theology. We journey with students as they figure out how to bring faith and life together, often in new and mutually enriching ways, so that Christian practice can become more faithful and transformative, for themselves and for the world. Attempting to bring life to faith and faith to life (Groome) may be the most complex but life-affirming invitation that SPPU offers.”**

Dr Philomena Cullen
Lecturer in Pastoral
Theology



Maynooth – The perfect town for study

Situated just 25km west of Dublin, you are right on the doorstep of Ireland's capital city



On-site campus accommodation available with preference given to SPPU Students, perfect for those wishing not to commute or whose programme runs over evenings or weekends.

Our campus is situated just off the M4 Motorway and within walking distance of Maynooth Railway station.

Maynooth is Ireland's only university town. It is home to a vibrant community, rich in heritage and modern conveniences, with excellent transport links across Ireland. With its warm and friendly atmosphere and array of shops, businesses, restaurants and bars, it has something to offer everyone, whether you are looking for culture, nature, or adventure.

The historic town has at either end of the main street, Maynooth Castle and Carton House, two former seats of the Dukes of Leinster. The University campus and town complement each other to the point where one acts as an extension of the other.

How to get here

By road from the West:

Travel along the M4 in the direction of Dublin, exit at Junction 7 for Maynooth and follow the brown University signs for South Campus.

By road from the East/Dublin City Centre:

Travel M4 Westbound, Exit at Junction 7 for Maynooth, following the brown University signs for South Campus.

By road from the North and South: From the M50, Exit at Junction 7 for M4. From M4 exit at Junction 7 for Maynooth, following the brown signs for South Campus.

By road from Dublin Airport:

Exit the Airport onto M1 direction for Dublin City/M50. Exit onto M50 travelling Southbound, from the M50, Exit at Junction 7 for M4. From M4 exit at Junction 7 for Maynooth, following the brown signs for South Campus.

By public transport:

Iarnród Éireann Irish Rail — Maynooth Service from Dublin Connolly — 41 mins



Iarnród Éireann Irish Rail — Sligo/Longford Service — 33mins



Bus Éireann — Route 115 — 41 mins



Dublin Bus — Maynooth served by C Spine routes from the heart of the city



Images by William Murphy - flickr.com/infomatique / CC BY 2.0

What our Alumni think

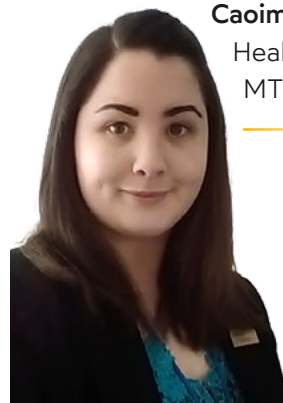
▶ **“My time in St Patrick’s Maynooth gave me a wider lens to see the world, a greater perspective that I bring to my role as Chaplain. Being a Chaplain in this community is very rewarding and allows me bring that part of Maynooth with me.**

What we bring to patients is much bigger than ourselves, it’s representative of our faith and Christ, which is critically important for people when they are facing the unknown, a diagnosis or a loss.”



Julianna Crowley, Chaplain
Cork University Hospital &
Cork Maternity Hospital,
BATH & MTh graduate.

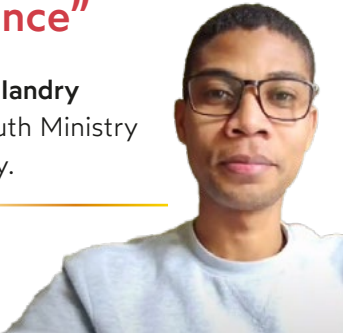
▶ **“The skills I developed during the Master's in Pastoral Theology such as teaching, self-reflection and leadership are imperative to my work in hospital ministry today and will be a continued influence in my future years of pastoral service.”**



Caoimhe Doherty
Healthcare Chaplain
MTh Pastoral Theology

▶ **“What I love about this course is the engaging lectures and group work combined with my placement experience”**

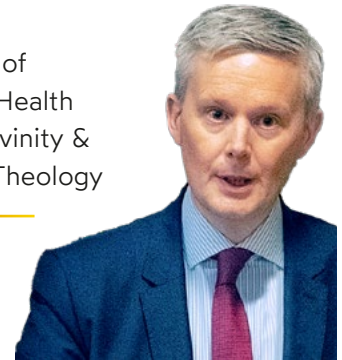
Jean Fredin landry
Diploma Youth Ministry & Spirituality.



▶ **“Your theology studies have the potential to shape both who you are and what you do, just as it did with me.**

With your own distinctive creativity and imagination, your theology has the potential to influence worlds as diverse as business and finance, education, environmental care, farming and marketing.”

Alan Burke
Head of Mission & Director of Pastoral Care Bon Secours Health System, Baccalaureate in Divinity & Graduate Studies in Moral Theology



▶ **“The ethos of St Patrick's and its way of teaching, learning and fostering new skills is the most important thing I could have learned.”**


Sinéad Hussey
HDip in Christian Communications,
Broadcaster - RTÉ





Centre for Mission & Ministries

The St Patrick's Pontifical University Centre for Mission and Ministries, located within the Faculty of Theology, exists to advance the participation of the Irish Church in the *Missio Dei* for the 21st Century.




The ethos of the Centre for Mission and Ministries is transformative, praxis-orientated, co-responsible, contextual, responsive and inclusive, founded on fundamental respect for the whole of creation.

It fosters the life and mission of the church by attending to its pastoral practice, liturgical celebration, and reflective heart.

The work of the Centre has a three-fold focus

- practical theology
- integrated formation, and
- interdisciplinary research.

Its activities are rooted in ongoing scholarship and a creative responsiveness to the 'signs of the times' in an evolving landscape. It seeks to be a valuable resource to parishes, pastoral areas, dioceses, religious communities and institutes, and faith-based agencies and organisations.



Rooted in the Catholic tradition and open to the work of the Spirit of God in the world, the Centre recognises and seeks to support and develop a wide diversity of callings and giftedness among the people of God. It is committed in the first instance to go out to the margins and engage comprehensively with contemporary culture.

It seeks to model communities of learning, research and liturgy and to empower partner organisations. The Centre is committed to peacebuilding, right relationships and dialogue with the other in the church and beyond.

The programmes delivered and associated with the centre foster these attitudes and values and are characterised by attention to service, theological reflection, human lived experience and the complex realities of the contemporary church in the world.



Our Programmes

By undertaking one of the Pastoral Programmes, candidates make a big commitment to their own personal and professional development for the sake of participating in the Christian mission. They are challenged to an ever-increasing self-understanding while also learning to listen deeply to others and interpret real situations in a self-conscious, critical, and disciplined manner.

The programmes are structured in a holistic way to nurture the personal, spiritual, pastoral, and intellectual growth of each person, within the context of a vibrant, multi-cultural, collegial community. Men and women – lay, religious, and ordained – practicing ministry in community, parish, and healthcare settings enrich one another's learning experience.

For many, undertaking education for ministry is a significant moment on the journey of vocational discernment, and growth in ministerial identity. Within the Pastoral Programmes, such discernment becomes not only personal, but communal and truly ecclesial as well.

Together with our Partners in Placement Education, we support the development of leaders for Catholic communities and faith-based activity within organisations and institutions. Inspired by the Gospel and Christian values, we offer a supportive environment in which people can grow in their faith and be receptive to God's call to discipleship and ministry.

If you choose one of the Pastoral Programmes, be prepared for a year (or more) of transformation that will renew your heart and mind. You will be invited to bring your whole self to your programme of study. Your own life experience will be a valuable textbook that you will bring into dialogue with other sources of theological insight. The learning and growth you will experience, along with the relationships you will make, will continue to shape you as a person and as a minister into the future.



Eileen O'Connell OP & Maureen Kelly,
Pastoral Programmes Co-ordinators

Please note that Programme levels in this document are indicative and dependent on SPPU establishment as a Listed Awarding Body which is expected before the commencement of the 2026/2027 academic year.

Modules listed in this document are indicative and are subject to change from time to time. Applications close at different times for different programmes but late applications may be accepted. We recommend checking with the relevant Programme Co-ordinator/ point of contact before making your application. Real time information updates can be found on sppu.ie in the relevant programme page.



Qualification:
Diploma



Duration:
Code MU727 2 years part-time (Classes scheduled on Friday evenings / Saturday mornings – 12 sessions per year)



Methods of Learning:
In-person



Commencement date:
September of each alternate year (next student intake, September 2026)
check sppu.ie



Application closing date:
Check sppu.ie/courses for application closing dates



Fees:
See sppu.ie/fees-and-funding



Programme Co-ordinator:
Dr John O'Keeffe
john.okeeffe@spcm.ie

Diploma in Church Music

Programme suitable for:

Those already involved in the ministry of church music in the Christian tradition, whether as organists, singers or choir directors.

Description:

The Diploma in Church Music provides learners with a unique opportunity to develop relevant musical skills and deepen their liturgical knowledge. This two-year, weekend-based, Level 7, 30 ECTS credits programme gives participants a foundation in church music in the Christian tradition.

Course Content:

Year 1

Cantor Skills 1

- Choral Conducting 1
- Introduction to Liturgy
- Liturgical Composition 1
- Organ Studies 1
- The Liturgical Assembly & Ministry

Year 2

Cantor Skills 2

- Choral Conducting 2
- Liturgical Composition
- Liturgy & Time
- Organ Studies 2
- The Eucharist



Diploma in Pastoral Ministry

Programme suitable for:

Candidates for the programme are put forward by their Diocese after completing a discernment process within the Diocese.

Description:

The programme forms adult learners for lay ministries identified by the diocese and is oriented toward the formation of skills and competencies for ministry. It provides learners with a grounding in core aspects of theology, liturgy, spirituality and reflective practice and allows specialisation for formation toward a specific ministry – pastoral care or catechesis. The programme combines an academic programme with reflective practice which includes ministry placements. It is specifically designed to prepare learners for recognised lay ministry. The aims of this programme are:

- To equip lay pastoral ministers with a broad knowledge of the theological content of their faith.
- To foster the development of a reflective approach to ministry thereby ensuring a fruitful meeting between faith and contemporary culture.
- To deepen awareness and appreciation of the wide variety of the forms of ecclesial ministry, lay and ordained.
- To form people in collaborative approaches to pastoral ministry.
- To enable candidates to acquire skills and resources that will sustain them throughout their ministry.

Programme learning outcomes

On completion of the programme, graduates will be able to:

- Demonstrate a broad understanding of theology as this relates to pastoral ministry.
- Display a specific knowledge of the theory, policy and practice of a specific area of ministry e.g. pastoral care and accompaniment; liturgy and prayer leadership; leadership and administration; or catechesis and adult faith formation.
- Engage with diverse sources to acquire new insights, integrating concepts from theology, psychology, community development and pastoral practice.
- Utilise the skills of theological reflection in the development of their ministry.
- Apply creative and conceptual skills and tools in pastoral ministry contexts including the relational skills needed to work collaboratively with others.
- Respond with flexibility to a wide and often unpredictable range of pastoral needs and challenges.
- Express an internalised world view grounded in solidarity with others and exhibiting empathy and cultural sensitivity in pastoral relationships and ministry practices.



Qualification:

Dip



Duration:

Code MU728

2 years part-time



Methods of Learning:

In-person on campus



Commencement date:

September of each year,

check sppu.ie



Application closing date:

Check sppu.ie/courses for application closing dates



Fees:

See sppu.ie/fees-and-funding



Programme Co-ordinator:

Maureen Kelly

maureen.kelly@spcm.ie



Qualification:
MLM



Duration:
Code MU507
2 years Full-Time



Methods of Learning:
In-person



Commencement date:
September of each year,
check sppu.ie



Application closing date:
Check sppu.ie/courses for
application closing dates



Fees:
See sppu.ie/fees-and-funding



Programme Co-ordinator:
Dr John O'Keeffe
john.okeeffe@spcm.ie

Rev Dr Neil Xavier
O'Donoghue
neilxavier.odonoghue@spcm.ie



Master's in Liturgical Music

Programme suitable for:

The programme qualifies holders to undertake the post of Organist, Cantor, or Director of Liturgical Music at parish, diocesan or national level.

Description:

The MLM is a joint academic and practice-based programme which combines theological and theoretical study of the Church's liturgy with advanced-level tuition in voice, organ and liturgical composition.

Admission requirements:

The course is especially suited to applicants who have studied Theology and Music to honours degree level. Candidates should normally have obtained at least a Second Class Honours, Grade I overall. The Faculty of Theology may also accept candidates whom it deems to have an equivalent standard. An interview will be part of the selection process. As this Master's programme contains a significant practical component, prospective candidates will need, on application, to furnish evidence of proficiency in at least one of the following three areas: (a) Cantor, (b) Organ, (c) Liturgical Composition. Candidates whose first language is not English will be required to satisfy the English language requirements.

Course Content:

Year 1

Core Academic Modules

- Liturgy: Ritual, Theological and Historical Approaches
- Sacramental Theology: Liturgical and Systematic Aspects
- Introduction to Liturgy and the Sacraments of Christian Initiation
- The Eucharist / Liturgical Time
- Music in Christian Worship
- Aspects of Liturgical Music

Recognition of Prior Learning may be considered for certain candidates in respect of the following modules:

- Introduction to Liturgy
- the Eucharist / Liturgical Time

In the following Practical Modules, learners take Liturgical Composition and choose between Organ Skills and Cantor Skills.

Practical Modules

- Liturgical Composition
- Organ Skills I
- Cantor Skills I

Year 2

- Methodology in Research
- Guided Thesis Research
- Major Practicum in a Musical Discipline

Higher Diploma in Youth Ministry and Spirituality

Description

The Higher Diploma in Youth Ministry and Spirituality is a response to the urgent needs of pastoral mission and care for young people in Ireland, especially in Catholic parishes throughout the country. This programme that equips learners to engage in practice as youth pastoral ministers in a professional manner. It is suitable for applicants who hold a recognised degree qualification where theology is at least a minor component. The programme provides a pathway to further studies in programmes at level 9, e.g. MTh in Pastoral Theology. It equips learners with methodological and pastoral qualifications and competencies to engage in research in youth ministry at a post graduate level.

The programme design supports the academic, theological, pastoral, spiritual, personal, and professional development of learners and the development of skills and competencies in leadership with a further focus on growth in self-understanding. The programme is structured to ensure the integration of academic study with practice-based learning – accompanying young people in different pastoral situations and in diverse settings, including school, parish, and youth centres (clubs and projects). Learning happens through course work, participation in seminars, human development, exploration of learner's own personal faith journey, and placement education. The study of fundamental pedagogical concepts and theories is complemented and enhanced by ongoing practical experience on placement where learners develop skills needed to minister professionally and effectively. The programme structure facilitates learners to develop both pastoral knowledge and professional skills for youth ministry in a Catholic context and provides opportunities to specialise in aspects of practice. Learners are given opportunity to minister in pastoral contexts in Ireland and/or internationally.

The programme commences in September with the registration of new learners. Recruitment, including individual interviews, is conducted during the previous academic year in line with the normal college admissions guidelines and dates.

Admissions requirements

Applicants are required to have a recognised degree qualification where theology is at least a minor component.

Applicants with other degrees may be considered if they have relevant experience in pastoral ministry to young people. They will be required to take courses in theology to qualify for admission to the programme. Evidence of such employment, its nature and level will be required. This will be considered in the interview process and the decision of the panel will be final. Candidates whose first language is not English will be required to satisfy the English language requirements.



Qualification:
Higher Diploma



Duration:
Code MU726
1 year Full-Time
Code MU730
2 years part-time



Methods of Learning:
In-person



Commencement date:
September of each year,
check sppu.ie



Application closing date:
Check sppu.ie/courses for
application closing dates



Fees:
See sppu.ie/fees-and-funding



Programme Co-ordinator:
Eileen O'Connell OP
eileen.oconnell@spcm.ie



Qualification:
Diploma



Duration:
Code MU721
1 year Full-Time
Code MU729
2 years part-time



Methods of Learning:
In-person



Commencement date:
September of each year,
check sppu.ie



Application closing date:
Check sppu.ie/courses for
application closing dates



Fees:
See sppu.ie/fees-and-funding



Programme Co-ordinator:
Eileen O'Connell OP
eileen.oconnell@spcm.ie

Diploma in Youth Ministry and Spirituality

Programme suitable for:

The Diploma in Youth Ministry and Spirituality programme is intended for those who wish to develop their pastoral knowledge and practical skills for youth ministry in a Catholic context. It is a response to the urgent needs of pastoral mission and care for young people in Ireland, especially in Catholic parishes throughout the country.

This introductory programme is designed as a pathway for learners who do not hold a degree in theology or youth ministry but who have sufficient and appropriate experience of working in youth ministry. It equips learners to engage in practice as youth pastoral ministers in a professional manner.

The programme design supports the academic, theological, pastoral, spiritual, personal, and professional development of learners and the development of skills and competencies in leadership with a further focus on growth in self-understanding. The programme is structured to ensure the integration of academic study with practice-based learning – accompanying young people in different pastoral situations and in diverse settings, including school, parish, and youth centres (clubs and projects). Learning happens through course work, participation in seminars, human development, exploration of learner's own personal faith journey, and placement education. The study of fundamental pedagogical concepts and theories is complemented and enhanced by ongoing practical experience on placement where learners develop skills needed to minister professionally and effectively. Learners are given opportunity to minister in pastoral contexts in Ireland and/or internationally.

The programme commences in September with the registration of new learners. Recruitment, including individual interviews, is conducted during the previous academic year in line with the normal college admissions guidelines and dates.

Admission requirements:

Entry requirements for the Diploma in Youth Ministry and Spirituality have been set in order to select potential learners who have the proven academic ability to undertake a Diploma course.

Applicants should normally hold Leaving Certificate (or equivalent) from a recognised education institution with a minimum of a pass in five subjects.

Other applicants may be considered if the following conditions apply:

* Applicants with experience in youth ministry or other relevant experience of pastoral ministry but who do not hold a Leaving Certificate (or equivalent) may be considered for entry. These will be required to provide evidence of such experience. This will be considered at interview and the decision of the panel will be final.

* Successful applicants who have no prior studies in theology will be required to undertake some study of theology prior to the start of the programme and concurrently with the programme. This can be achieved through short course modules that are offered online over the summer and during the academic year.

Candidates whose first language is not English will be required to satisfy the English language requirement.



Pastoral Liturgy Diploma /Higher Diploma (Blended Learning)

The Diploma in Pastoral Liturgy attests to the completion of a substantial and coherent programme of learning, allowing learners to finish an accredited introductory programme in pastoral liturgy and to obtain a credential for it. This one-year, evening/weekend, Level 7, 60 ECTS credits programme gives a foundation in Pastoral Liturgy. Admission to the course is normally confined to those who have a basic academic qualification at second level. Particular consideration will be given to applicants who have relevant pastoral experience in their local parish or diocese. Others may be interested in the programme simply as a way to better understand the liturgical life of the Church, which is the highest expression of theology in the Catholic tradition.

The Higher Diploma is a one-year, evening/weekend, Level 8, 60 ECTS credits programme that gives a foundation in Pastoral Liturgy to learners who hold a primary degree in another discipline. Other learners may use the programme as a gateway to applying to a Master's programme in Liturgical Theology or Pastoral Ministry either here in Maynooth or elsewhere (learners interested in entering a Master's programme are advised to speak with our Postgraduate Admissions Office pgadmissions@spcm.ie prior to starting the HDip for further details). Others may be interested in the programme simply as a way to better understand the liturgical life of the Church, which is the highest expression of theology in the Catholic tradition. Additionally, the Higher Diploma equips graduates to take a more active role in their local church community.

The Higher Diploma and the Diploma are taken together in a common structure with common classes. However, both programmes are evaluated at the appropriate level. All evaluations will take account of the student's level and there will be different goals and expectations for learners in the Dip and HDip programmes.

Admission Requirements:

A primary degree or its equivalent is required for the HDip.

For admission to the Diploma programme a pass grade is required in five subjects of the Leaving Certificate or its equivalent: three of these must be academic subjects in the Maynooth University matriculation syllabus. Consideration will be given to all applications. Applicants with experience in ministry at the parish or diocesan level will be given particular consideration.

Method of Learning:

- Online teaching on Wednesdays - 6.30 p.m. – 9.30 p.m. learners can participate from wherever is convenient to them
- 3 hours of self-directed learning each week when classes are in session, at times that suit learners
- Weekly time for study and working on assignments
- 6 weekend residentials (Friday/Saturday), three each semester, with face-to-face classes.



Qualification:

Diploma
HDip



Duration:

Diploma Code MU723
HDip Code MU724
1 year - Evening/Weekend



Methods of Learning:

Blended - online and on-campus learning



Commencement date:

September of each year,
check sppu.ie



Application closing date:

Check sppu.ie/courses for application closing dates



Fees:

See sppu.ie/fees-and-funding



Programme Co-ordinator:

Rev Dr Neil Xavier O'Donoghue
neilxavier.odonoghue@spcm.ie



▶ "I came to Maynooth to learn more about liturgy and it opened up a whole new world for me. I have completed a Master's in Theology and my daughters think that I will never leave!"

Mary Clavin, Volunteer Parish Worker - Higher Diploma in Pastoral Liturgy & MTh



Qualification:
Diploma



Duration:
Code MU519
1 year Full-Time or
Code MU540
2 years Part-Time



Methods of Learning:

- In-person on campus
- Placement Education onsite in a Teaching Parish or equivalent setting



Commencement date:
September of each year,
check sppu.ie



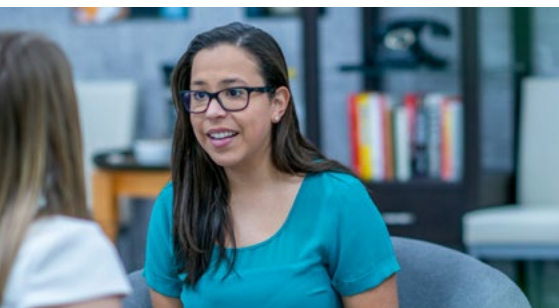
Application closing date:
Check sppu.ie/courses for
application closing dates



Fees:
See sppu.ie/fees-and-funding



Programme Co-ordinator:
Eileen O'Connell OP
eileen.oconnell@spcm.ie



Diploma in Pastoral Theology

Programme suitable for:

Persons who have some experience in parish-based ministry or administration, catechesis or sacramental preparation, or similar, but who do not have a formal qualification. It also suits those looking for an introduction to faith-based ministry in community, school, and hospital settings. These candidates study at diploma level because they do not have a primary degree.

Description:

This is a level 7, introductory programme for someone preparing for ministry leadership in the Church.

It forms part of a person's initial formation, preparing him/her for exercising the responsibilities of ministry, especially leadership in public prayer, pastoral care and spiritual accompaniment, and building and strengthening community. This includes acquiring specialised skills to teach in diverse settings, provide effective catechetical and faith formation, and exercise responsible stewardship of parish personnel and resources.

This level allows learners to develop a specialised knowledge of theological principles as these relate to ministry practice. Learners form an ability to integrate their learning from academic study and placement experiences in parish, and school settings, in order to establish a sense of ministerial identity and exercise appropriate judgement in ministry leadership.

This diploma follows the same academic and placement schedules as the Higher Diploma in Pastoral Theology, and is awarded on the successful completion of one year's full-time engagement.

Admission requirements:

- Candidates who have experience in parish-based or other pastoral ministry but do not hold a primary degree may be considered for entry.
- They may be required to take courses in theology to qualify for admission.
- Candidates whose first language is not English will be required to satisfy the English language requirement.
- Successful individual interviews are an essential part of the selection process.

Placement education and Clinical Pastoral Education

At St Patrick's Pontifical University, our goal is to provide pastoral formation for our learners, to cultivate the knowledge, attitudes, and skills they will need to minister effectively in the diverse pastoral settings. We work in partnership with parishes and other pastoral settings where learners benefit from mentoring and supervision by those experienced in ministry. Learners undertake 19-20 hours of ministry placement per week for the duration of the academic year along with extended periods of block placement. Learners undertake a separate 12 week placement, completing a unit of Clinical Pastoral Education (CPE) in an accredited CPE hospital or its equivalent (12 weeks), typically beginning in late April or early May.

Higher Diploma in Pastoral Theology

Programme suitable for:

Persons who have a prior degree and have at least 65 ECTS of Theology and seek to specialise in some form of pastoral ministry. Candidates may have experience in parish-based ministry or administration, catechesis or sacramental preparation, or similar, but do not have a formal qualification. It also suits those looking for an introduction to faith-based ministry in community, and school settings.

Description:

This level 8 programme forms part of a person's initial formation for ministry leadership in the Church, preparing him/her to minister effectively in a peer relationship with other pastoral ministers.

Learners are taught to use advanced skills in professional ministry, especially leadership in public prayer, pastoral care and spiritual accompaniment, and building and strengthening community.

This includes using and transforming advanced skills and tools to teach in diverse settings, provide effective catechetical and faith formation, and exercise responsible stewardship of parish personnel and resources.

Admission requirements:

Candidates are required to have a recognised degree qualification where theology is at least a major component. Candidates with other degrees may be admitted if they have experience in pastoral ministry. However, these will be required to take courses in theology to qualify for admission. Learners whose first language is not English will be required to satisfy the English language requirement. Successful interviews are an essential part of the selection process.

Placement education and Clinical Pastoral Education

At St Patrick's Pontifical University, our goal is to provide pastoral formation for our learners, to cultivate the knowledge, attitudes, and skills they will need to minister effectively in the diverse pastoral settings. We work in partnership with parishes and other pastoral settings where learners benefit from mentoring and supervision by those experienced in ministry. Learners undertake 19-20 hours of ministry placement per week for the duration of the academic year along with extended periods of block placement. Learners undertake a separate 12 week placement, completing a unit of Clinical Pastoral Education (CPE) in an accredited CPE hospital or its equivalent (12 weeks), typically beginning in late April or early May.



Qualification:

HDip



Duration:

Code MU520

1 year Full-Time or

Code MU541

2 years Part-Time



Methods of Learning:

- In-person on campus
- Placement Education onsite in a Teaching Parish or equivalent setting



Commencement date:

September of each year,

check sppu.ie



Application closing date:

Check sppu.ie/courses for application closing dates



Fees:

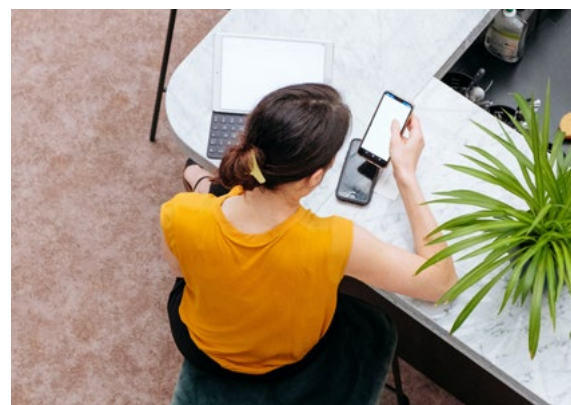
See sppu.ie/fees-and-funding



Programme Co-ordinator:

Eileen O'Connell OP

eileen.oconnell@spcm.ie





Qualification:
MTh



Duration:
Code MU505
2 years Full-Time or
Code MU506
3 years Part-Time.



Methods of Learning:

- In-person on campus
- Placement Education onsite in a Teaching Parish or equivalent setting
- Supervised Research



Commencement date:
September of each year, check sppu.ie



Application closing date:
Check sppu.ie/courses for application closing dates



Fees:
See sppu.ie/fees-and-funding



Programme Co-ordinator:
Dr Philomena Cullen
philomena.cullen@spcm.ie

Master's in Theology (Pastoral Theology)

Programme suitable for:

Graduates of Theology degrees seeking to specialise in some form of pastoral ministry and undertake research within the field of Pastoral/ Practical Theology. Candidates may have a significant amount of ministry experience in a given area but have not had any formal preparation for pastoral leadership. Ministers seeking professional growth and development to strengthen their leadership capacity in a changing ministerial landscape.

Description:

This level 9 programme ideally forms part of a minister's continuing journey of growth and development, strengthening his/her capacity for ministry leadership in the Church.

At this level, ministers are enabled to take significant responsibility for the work of individuals and groups, and for leading and initiating mission-focused activity in a wide (and sometimes unpredictable) variety of professional levels and contexts. Learners develop new skills to a high level, including novel and emerging approaches in professional ministry, especially within the areas of leadership in public prayer, pastoral care and spiritual accompaniment, and building and strengthening community. Learners learn complex and advanced skills to teach in diverse settings, provide effective catechetical and faith formation, and exercise responsible stewardship of parish personnel and resources.

Admission requirements:

The minimum entry requirement for the programme is an honours primary degree in which Theology comprises at least an equal joint honours component. Applicants should have obtained a Second Class Honours, Grade I overall, and Second Class Honours, Grade I in Theology, with marks in the upper range of the band (approximately 65% or above). Applicants should also have significant experience in ministry practice. All applicants must successfully complete both an individual and a group interview, which forms an assessed component of the admissions process. Additionally, applicants are expected to complete the application form carefully and in full. Incomplete or partially completed forms may delay or prevent consideration of the application.

The Faculty of Theology may also accept applicants whom it deems to have achieved an equivalent standard. They may be required to take additional courses in Theology to qualify for admission. In addition, candidates must attend Postgraduate Induction, held in September.

Placement Education:

At St Patrick's Pontifical University, our goal is to provide pastoral formation for our students, to cultivate the knowledge, attitudes, and skills they will need to minister effectively in the diverse pastoral settings. Our strategy is to have vital 'Teaching Pastoral Contexts' that will work in partnership with the Pastoral Programmes at SPPU, and complement the learning that takes place in the classroom setting in Maynooth. The Teaching Pastoral Contexts will provide learners with good quality placement experiences within beneficial and instructive learning environments.

Learners undertake between 414-429 hours of ministry practice in Teaching Placement sites (i.e., in approved community and school settings), alongside experienced mentors, for the duration of the academic year. They undertake a second, 10-12 week placement in a clinical setting by completing a unit of Clinical Pastoral Education (CPE) in an accredited CPE hospital.

Higher Diploma in Pastoral Theology (Healthcare Chaplaincy)

Description:

This programme is aimed at those who wish to minister as chaplains in healthcare settings.

The course is structured to ensure the integration of academic study with placement experiences in healthcare settings, so that learners establish a sense of ministerial identity and exercise appropriate judgment in ministry.

It equips learners with skills for professional ministry as chaplains, especially leadership in prayer, pastoral care, and accompaniment of persons who suffer because of illness, trauma, tragedy, grief and bereavement. It prepares learners to minister effectively in collaboration with multi-disciplinary healthcare colleagues in the provision of holistic healthcare.

This Higher Diploma qualification is a recognised pathway to certification as a Catholic Healthcare Chaplain, approved by the Healthcare Chaplaincy Board of the Irish Catholic Bishops' Conference. Following completion of the programme, graduates may apply to the HCB for certification.

Admission requirements:

Applicants must have a recognised degree qualification and 60 ECTS of theology. Candidates with other degrees may be admitted if they have experience in pastoral ministry. However, these will be required to take courses in theology to qualify for admission. Those whose first language is not English will be required to satisfy the English language requirement. Successful individual and group interviews are an essential part of the selection process. Candidates who are interested in part-time studies must indicate this preference at application stage.

Placement Education:

At St Patrick's Pontifical University, our goal is to provide pastoral formation for our learners, to cultivate the knowledge, attitudes, and skills they will need to minister effectively in diverse healthcare settings. We work in partnership with approved healthcare settings where learners benefit from mentoring and supervision.

Learners undertake 19-20 hours of ministry placement per week for the duration of the academic year along with extended periods of block placement. Learners undertake a separate 12 week summer intensive placement of 35 hours per week beginning at the end of May. For part-time learners, this summer placement may be taken over two years.



Qualification:

HDip



Duration:

Code MU521

1 year Full-Time or

Code MU542

2 years Part-Time



Methods of Learning:

- In-person on campus
- Clinical Placement/ Internship onsite in an approved Teaching Hospital



Commencement date:

September of each year, check sppu.ie



Application closing date:

Check sppu.ie/courses for application closing dates



Fees:

See sppu.ie/fees-and-funding



Programme Co-ordinator:

Maureen Kelly

maureen.kelly@spcm.ie





Qualification:
MTh



Duration:
Code MU517
2 years Full-Time
Code MU538
3 years Part-Time



Methods of Learning:

- In-person on campus
- Clinical Placement/ Internship onsite in an approved Teaching Hospital



Commencement date:
September of each year, check sppu.ie



Application closing date:
Check sppu.ie/courses for application closing dates



Fees:
See sppu.ie/fees-and-funding



Programme Co-ordinator:
Dr Philomena Cullen
philomena.cullen@sppu.ie

Master's in Theology (Pastoral Theology, Healthcare Chaplaincy)

Programme suitable for:

Graduates of Theology degrees seeking to specialise in Healthcare Chaplaincy and undertake research within the field of Pastoral/Practical Theology. Healthcare Chaplains may undertake this programme as part of their ongoing professional development.

Description:

This programme forms part of a minister's continuing journey of growth and development, strengthening capacity for chaplaincy leadership in healthcare systems, and in various healthcare facilities. This includes taking responsibility for professional relationship building with multi-disciplinary healthcare colleagues, strengthening the provision of pastoral care in healthcare institutions, and for advancing professional, holistic, compassionate quality care for patients, families, and staff.

Each candidate completes a Master's dissertation that presents a rigorous, in-depth, evidence-based, critical examination of a particular pastoral area of healthcare chaplaincy practice. The candidate thus acquires a mastery in techniques of reflection and enquiry, and methods of research, while contributing to the body of chaplaincy research and to transforming ministerial practice. It will enable candidates to exercise the highest quality pastoral care in clinical practice and be effective leaders in the future development of the profession.

Admission requirements:

The minimum entry requirement for the programme is an honours primary degree in which Theology comprises at least an equal joint honours component. Applicants should have obtained at least a Second Class Honours, Grade I overall, and Second Class Honours, Grade I in Theology, with marks in the upper range of the band (approximately 65% or above). Applicants should also have significant experience in ministry practice. All applicants must successfully complete both individual and group interviews, which form an assessed component of the admissions process. Additionally, applicants are expected to complete the application form carefully and in full. Incomplete or partially completed forms may delay or prevent consideration of the application. The Faculty of Theology may also accept applicants whom it deems to have achieved an equivalent standard. They may be required to take additional courses in Theology to qualify for admission. In addition, candidates must attend Postgraduate Induction, held in September.

Placement Education:

At St Patrick's Pontifical University, our goal is to provide pastoral formation for our learners, to cultivate the knowledge, attitudes, and skills they will need to minister effectively in the diverse pastoral settings. Our strategy is to have vital 'Teaching Pastoral Contexts' that will work in partnership with the Pastoral Programmes at SPPU, and complement the learning that takes place in the classroom setting in Maynooth. The Teaching Pastoral Contexts will provide learners with good quality placement experiences within beneficial and instructive learning environments.

In Year One, learners undertake between 414-429 hours of ministry practice in an approved Teaching Hospital, alongside experienced mentors, for the duration of the academic year. They undertake an additional 350 hours of clinical placement over a 10 week period in the Summer (May -July). In Year Two, 100 hours of independent practice in an approved clinical setting (average 10 hours p.w. for 12 weeks, during the third semester).



Professional Certificates in Catholic Religious Education and Theological Studies

Programmes suitable for:

The Professional Certificates in Catholic Religious Education and Theological Studies are limited to students at Maynooth University who are preparing to be teachers in Irish Primary Schools. The Undergraduate Certificate works in conjunction with the Bachelor of Education (Bed) and the Postgraduate Certificate works in conjunction with the Professional Master's in Education (Primary Teaching) both of which are awarded by Maynooth University.

Description:

The Professional Undergraduate and Post Graduate Certificates are offered in collaboration with the Froebel Department of Primary and Early Childhood Education (Maynooth University). The Educational Writings of Friedrich Froebel (1782-1852) outline his philosophy on early childhood education, importance of play and activity, and child-centred methodologies. His writings have much in common with the philosophy at the heart of Catholic Education.

The Certificates are designed to educate teachers in foundational theological and religious education knowledge and equip them with the pedagogical skills necessary for communicating the Catholic faith in primary schools. The undergraduate certificate is delivered over the course of four years and the postgraduate certificate over two years.

It aims to form teachers capable of responding to the many spiritual and religious opportunities and challenges facing primary school pupils. From the point of view of equipping future teachers for Catholic schools, the following points are of particular relevance.

- The concept of the "unison" between nature and the human person is sprung from one and the same Creator. This is called "inner connection";
- The recognition of truth begins in the real, visible world in the phenomena of nature, in which the laws of God are to be found, learned, and known as unchangeable.
- In all things, there lives and reigns an eternal law. This law is based on an eternal unity. This unity is God. All things have come from God, and have their origin in the Divine Unity, in God alone.



Qualifications:

Code MU713 Professional Certificate in Catholic Religious Education and Theological Studies

Code MU714 Professional Postgraduate Certificate in Catholic Religious Education and Theological Studies



Methods of Learning:

Blended Learning



Commencement date:

September of each year, check sppu.ie



Application closing date:

Check sppu.ie/courses for application closing dates



Fees:

See sppu.ie/fees-and-funding



Programme Co-ordinator:

Rev. Dr John-Paul Sheridan
johnpaul.sheridan@spcm.ie

Application:

Online Application following Student Orientation





Qualification:
DDS



Duration:
Code MU725
3 years part-time



Methods of Learning:
In-person and Online
Lectures



Commencement date:
September of each year,
check sppu.ie



Application closing date:
Check sppu.ie/courses for
application closing dates



Fees:
See sppu.ie/fees-and-funding



Programme Co-ordinator:
Rev Brian Kavanagh

For further details,

See the website:
sppu.ie/courses/diploma-in-diaconate-studies

CMM Admissions Office
St Patrick's Pontifical University,
Maynooth, County Kildare

Email: cmmadmissions@spcm.ie



Diploma in Diaconal Studies

Programme suitable for:

Those interested in becoming a Permanent Deacon.

The Diploma in Diaconal Studies is a 90 ECT part-time hybrid programme over three years. The aims and learning outcomes of the programme are those already agreed with the National Training Authority for the Permanent Diaconate of the Irish Episcopal Conference.

Programme Aims and Learning Outcomes

The aims of this programme are:

- To equip future permanent deacons with broad knowledge of the theological content of their faith
- To foster the development of a reflective approach to ministry thereby ensuring a fruitful meeting between faith and contemporary culture
- To deepen awareness and appreciation of the wide variety of the forms of ecclesial ministry, lay and ordained
- To enable candidates to acquire skills and resources that will sustain them throughout their ministry.

By the end of this programme successful candidates will be able to:

- exhibit a foundational knowledge of the doctrines of faith and theology
- demonstrate an ability to read and interpret biblical and ecclesiastical texts
- utilise the skill of theological reflection
- apply research methods appropriate to theology and pastoral ministry
- draw on bibliographical resources, research methods and secondary material responsibly.

Admission Requirements:

Admission on the programme is by way of acceptance by a Roman Catholic Bishop on to a formation programme for the Permanent Diaconate.

In the first instance, if you are considering the possibility of offering yourself for service as a deacon, you should make contact with your local Diocesan Director for the Permanent Diaconate contactable through the local Bishop's Office. An arrangement will be made to meet with you to explore any questions you may have, and to decide whether it would be appropriate for you to participate in a propaedeutic (preparatory) period, which ordinarily takes one year.

Anyone wishing to participate in the propaedeutic programme which begins in the Autumn, should make his initial enquiry no later than the end of June of that year. Acceptance into the propaedeutic programme is not, however, a guarantee of acceptance into formation, or of eventual ordination to the permanent diaconate.

Collaborative Programmes

The following programmes are provided through partners.

For further information, please apply to the appropriate programme provider at the address indicated.



**Collaborative Programmes
Co-ordinator:**

Dr Jessie Rogers, MA, D.Phil

Certificate in Person Centred Counselling (Marriage & Relationships)

Dr Mary Goss
ACCORD Central Office,
Columba Centre, Maynooth, Co Kildare

Tel: [+353 \(0\)1 505 3112](tel:+353(0)15053112)

Website: accord.ie

Diploma in Spirituality (Spiritual Direction)

Eileen O'Brien
Manresa Jesuit Centre of Spirituality,
426 Clontarf Road, Dollymount, Dublin 3.

Tel: [+353 \(0\)1 833 1352](tel:+353(0)18331352)

Website: manresa.ie

Certificate in Christian Studies

United Dioceses of Tuam, Limerick and Killaloe
Diocese of Cashel Ferns and Ossory
Very Rev'd Dr Richard Marsh
Email: dean@stflannanscathedral.com

Diocese of Cork,
Cloyne and Ross (Church of Ireland)
Rev Terry Mitchell,
Diocesan Further Education & Training Officer

Tel: [+353 \(0\) 87 2767562](tel:+353(0)872767562)

Email: furthereducation@corkchurchofireland.com

Certificate in Marriage Education

Aisling Dignam
adignam@accord.ie
ACCORD Central Office,
Columba Centre, Maynooth, Co Kildare

Tel: [+353 \(0\)1 505 3112](tel:+353(0)15053112)

Website: accord.ie

Certificate / Diploma / Degree in Theology (Adult Education & Pastoral Ministry)

Armagh Diocesan Pastoral Office,
Holy Family Parochial House, Hoey's Lane,
Dundalk, Co. Louth, A91 K761

Tel: [+353 \(0\)42 935 1316](tel:+353(0)429351316)

Email: milanda@parishandfamily.com

Carmelite Studies (Suite of Awards)

- **Certificate / Diploma in Spirituality** (Carmelite Studies)
- **Certificate / Diploma in Theology** (Carmelite Studies)
- **BTh** (Carmelite Studies)
- **MTh** (Carmelite Studies)

Dr Remigius Ikpe
Carmelite Institute of Britain and Ireland

Email: admin@cibi.ie

Website: cibi.ie

CMM Online

We offer three forms of online programmes.



Professional Accredited Modules

Learners can enhance their careers with ten-week online modules in Ethics, Pastoral Care, and Values Based Leadership.

- **Ethical Leadership in Values-Based Organisations: Integrating Faith and Principle**
- **Catholic Healthcare Ethics in the 21st Century**
- **Autonomy and Paternalism (Consent and Confidentiality)**
- **'Values Based Reflective Practice: Decisions Decisions Decisions'**
- **Discerning Leadership: Spiritual Wisdom for Organisational Life'**

Modules can be combined towards the award of a Postgraduate Diploma.

Contact cmmadmissions@spcm.ie or visit aspal.ie/accelerate-your-career for more information.

Tarsus Scripture School

The Tarsus Scripture School team - Kieran O'Mahony, Sean Goan and Dr Jessie Rogers, offer online and in-person adult education courses on the Bible.

Visit tarsusscriptureschool.ie for more information.

Aspal

The Aspal online learning platform serves those involved in ministry in parishes and dioceses in Ireland. It allows people, in the comfort of their own homes, to engage with the highest quality of ongoing faith formation.



Aspal is the product of a collaboration of the Adult Faith Development Team in Ossory Diocese and St Patrick's Pontifical University, Maynooth.

Current Courses include:

- **Introducing Synodality**
- **Formation for Ministers of the Eucharist**
- **The Kiss of Christ**
- **Pathways to Ministry**
- **Pastoral Council training & planning**
- **Foundations in Youth Ministry**
- **Advent course - Emmanuel- God with us**

For more information and to register for online courses visit aspal.ie

Aspal has been made possible thanks to the support of the Benefact Trust.

Student Support

The University Library

The Library is a key resource for learners. A team of dedicated staff provide all learners with a high quality service in a friendly and student-centred environment. The library offers space for eight different learning styles, from the collaborative to totally silent spaces. Staff are always on hand to deal with any queries learners may have. The eBook collection and almost 50,000 journals can be accessed by registered learners via the web from anywhere in the world. Kindle readers are available to borrow and PCs and laptops are available throughout the library. More information about the library can be found at sppu.ie/library.



John Paul II
Library

Student Accommodation

As a student of the Centre for Mission & Ministries, you can avail of accommodation on site in the historic St Patrick's campus on a short-term basis to suit your needs. Learners attending evening and weekend classes can opt to stay over should they wish.

For more information visit sppu.ie/accommodation or email: villageaccounts@spcm.ie

Mentoring

Individual student mentoring is available by request. For more information email mcomm@spcm.ie



Scholarships

St Patrick's Pontifical University, Maynooth awards scholarships, grants, and fee remission to current and incoming postgraduate candidates in order to promote and foster excellence in scholarship and research, but also to support Mission & Ministries learners in their studies, to enhance their experience of study and research, and to broaden their academic horizons.



Scholarships and grants are awarded initially for one year but may be considered for renewal from year to year during the holder's course of studies subject to renewed application.

The range of scholarships and grants offered by the University may not necessarily be awarded every year. Preference is given to applicants who do not hold any other scholarship or educational award. Prospective incoming candidates who have been accepted into a programme may be invited to apply for scholarships, grants or fee remission as appropriate. Scholarships are awarded to successful candidates specifically in recognition of their academic excellence and potential. Grants may be assigned to successful candidates on a financial needs basis in all other cases.



Fee Remission is awarded in identified circumstances on the instruction of the President in consultation with the Scholarships and Grants Board. The Scholarships and Grants Board reserves the right to determine any Scholarship, Grant or Fee Remission in whatever manner deemed suitable given a candidate's application.

Such awards may include support for accommodation costs, fees, or otherwise. Further information and the Scholarships Listing can be found on our website: sppu.ie/scholarships-funding.



Applying to us

Irish and EU applicants

Applications are now being accepted on sppu.ie/courses by selecting your course of choice and following the apply now instructions. If you have any queries please contact pgadmissions@spcm.ie.

Admission Requirements

- All intending applicants are advised to familiarise themselves with the entry requirements and the start dates for the programme(s) of their choice. Full details for each programme on offer in St Patrick's Pontifical University can be found at sppu.ie/courses.

Student Assistance Fund (SAF)

The Student Assistance/Access Fund is jointly sponsored by the European Social Fund and the Irish Government. It is available for students who require additional financial support to enable them to benefit fully from their third level studies. Registered students do not necessarily need to be grant holders to apply for funding. It simply offers a limited amount of financial support to students who experience financial difficulties related to the costs of their studies. The funding is available to all EU registered students of St Patrick's Pontifical University

Transfer applications

Applications are welcomed from candidates who have completed one or more years of a postgraduate programme and wish to transfer into one of our postgraduate programmes. Transfer applicants must also apply online through the University's Direct Application Portal.

Fees

The fees for our postgraduate courses vary from course to course. Our Full-Time, Postgraduate Master's in Theology, & Doctorate in Theology are approved courses for the purposes of SUSI Grants.

For further queries please contact fees@spcm.ie or visit sppu.ie/fees-and-funding.

International Students

International / Non-EU applicants from outside the Republic of Ireland

Applicants are to apply by the date specified alongside each course.

International / Non-EU must apply through the University's Direct Application Portal. There is an "Apply Now" button on the front page of each programme on our website, which will take applicants directly to the Application Portal.

Visa Applications

It is vital that international students begin the visa application process as soon as possible. All postgraduate students are obliged to attend induction/orientation sessions at the start of the first semester. The timetable will be sent to you on acceptance to the programme. *Please be aware that students who arrive late may not be allowed to start the programme.*

Academic and English-Language Requirements for non-EU citizens

International applicants must have a recognised primary (undergraduate) degree which is considered equivalent to an Irish university primary degree. Some programmes may have additional requirements. The minimum English-language requirements for postgraduate study are: IELTS 6.5 overall or equivalent.

Information on Recognised Prior Learning and Recognised Prior Experiential Learning at SPPU

SPPU accepts applications for both recognised prior learning (RPL) and recognised experiential prior learning (RPEL). SPPU is in alignment with the National Strategy for Higher Education to 2030 and Ireland's National Skills Strategy 2025, where the University has committed to develop and implement a standardised system of accreditation of prior learning taking account of previous education, skills, work experience and engagement in society. QQI's core statutory quality assurance guidelines also require that SPPU policies and procedures for learner admission, progression and recognition include fair recognition of education and training qualifications, periods of study and prior learning, including the recognition of non-formal and informal learning. In this way SPPU's ethos enables flexible learning pathways.

From an admissions perspective, whilst there are normally defined academic entry requirements for university programmes, it is appropriate that SPPU has mechanisms to allow entry to applicants who do not meet the normal requirements, but who are, for other reasons deserving of admission.

Recognition of prior learning is when formal recognition is given for relevant learning already obtained prior to starting on a programme or module. That learning may have been attained through or in a formal, non-formal and informal experience or context.

There are three defined routes of access through RPL to SPPU;

1. Direct entry to first year: Learners can commence a programme of study at SPPU, based on learning outcomes which identify the knowledge, skill and competence required to enter.
2. Advanced entry to a programme of study in cases where a learner can demonstrate that they already achieved the learning outcomes associated with all modules for the stage or year for which they are seeking an exemption.
3. Granting of exemptions or credits for all types of learning.

Please contact **registry@spcm.ie** for further information

Information on placements for International Learners

International learners enrolled on courses on certain programmes at SPPU (Level 7 or equivalent and above) are allowed to undertake an internship where this forms part of their programme. This is subject to the following rules.

- The internship or work placement component of the course cannot exceed 50% of the duration of the course. In addition the employment cannot be in a self-employed capacity.
- Work placements as part of the academic programme must form an integral part of the course and their completion contribute to the final award.
- SPPU ensures that the placements are appropriate to the nature and level of the academic programme being pursued.

The Programme Coordinator for the respective programme will assist students in securing placement.



St Patrick's Pontifical University, Maynooth also offers a range of programmes from Diploma/Higher Diploma to Licentiate, Master's and Doctorate in Theology and Philosophy.

These Programmes are offered by our Postgraduate office, details are available online at sppu.ie/courses and in our Postgraduate Prospectus.

Disclaimer: The information contained in this publication is intended as a guide for those seeking admission to St Patrick's Pontifical University and does not constitute a contract or any terms thereof between the University and any intending applicant or any third party. Neither is it intended to give rise to legal obligations of any kind on the part of the University or its employees. The University reserves the right at any time, or from time to time, to cancel, revise, amend, or alter programmes of study and academic regulations. The University is not responsible for and shall not be bound by any errors in, or omissions from this publication.



Maynooth Centre for Mission & Ministries

Staying in touch

St Patrick's Pontifical University
Maynooth
Co. Kildare
W23 TW77
Ireland

T +353 (0)1 708 4778

E mcmm@spcm.ie

Sign up to our newsletters at
sppu.ie/newsletters

sppu.ie

